

Матеріали курсу лекцій по інженерної графіки
для спеціальностей
АКіт, СІт, КІт

ГОСТ 2.301-68 - формати креслеників

A1 - 594×841 ; A2 - 594×420 ; **A3 - 297×420 ;**
A4 - 297×210 ; A5 - 297×148

ГОСТ 2.302-68 - масштаби

Масштаби зменшення - 1 : 2; 1 : 2,5; 1 : 4; 1 : 5; 1 : 10; 1 : 20 и т.д.

Натуральна величина 1 : 1

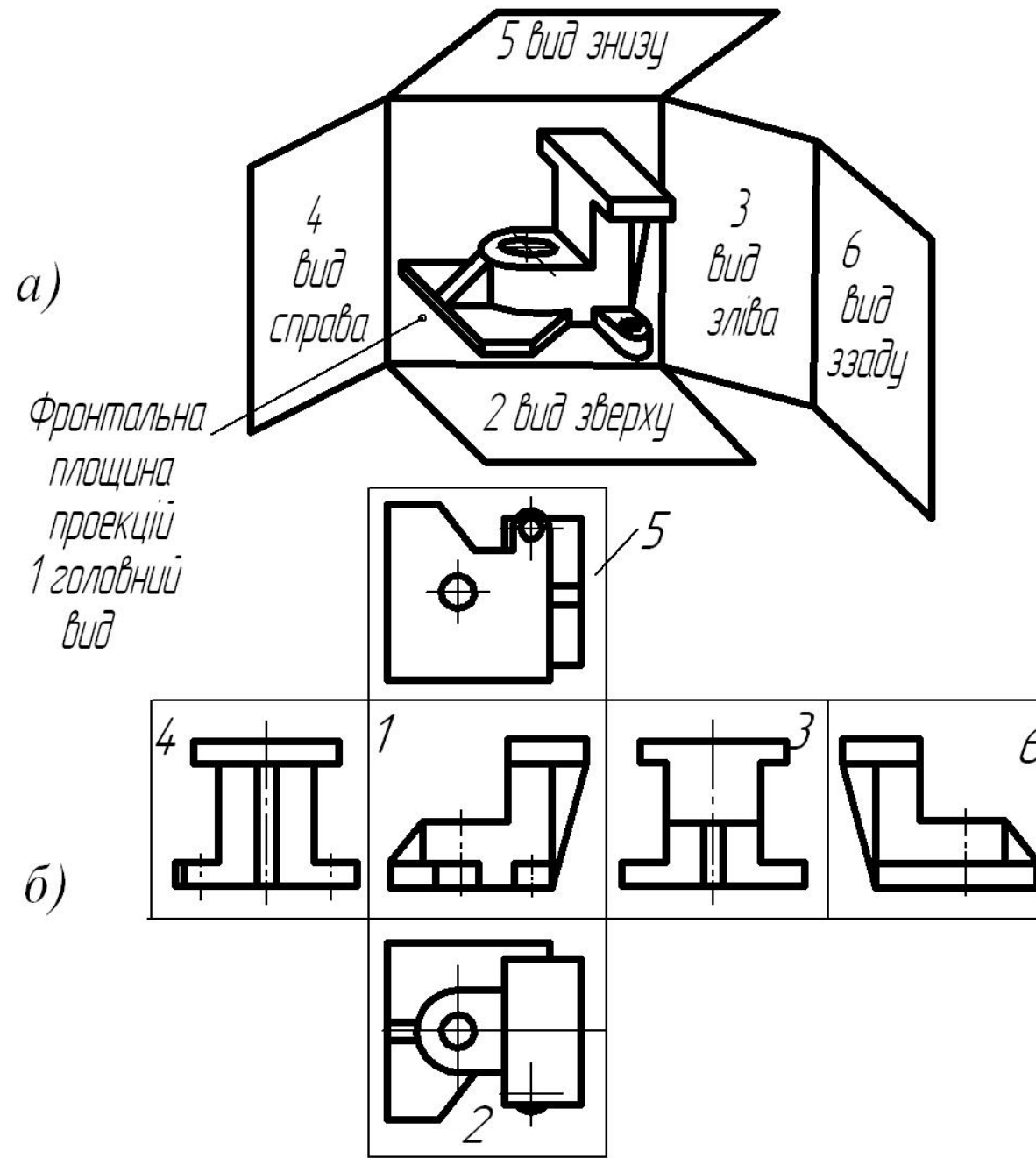
Масштаби збільшення - 2 : 1; 2,5 : 1; 4 : 1; 5 : 1; 10 : 1; 20 : 1 и т.д.

ГОСТ 2.303-68 - лінії на креслениках

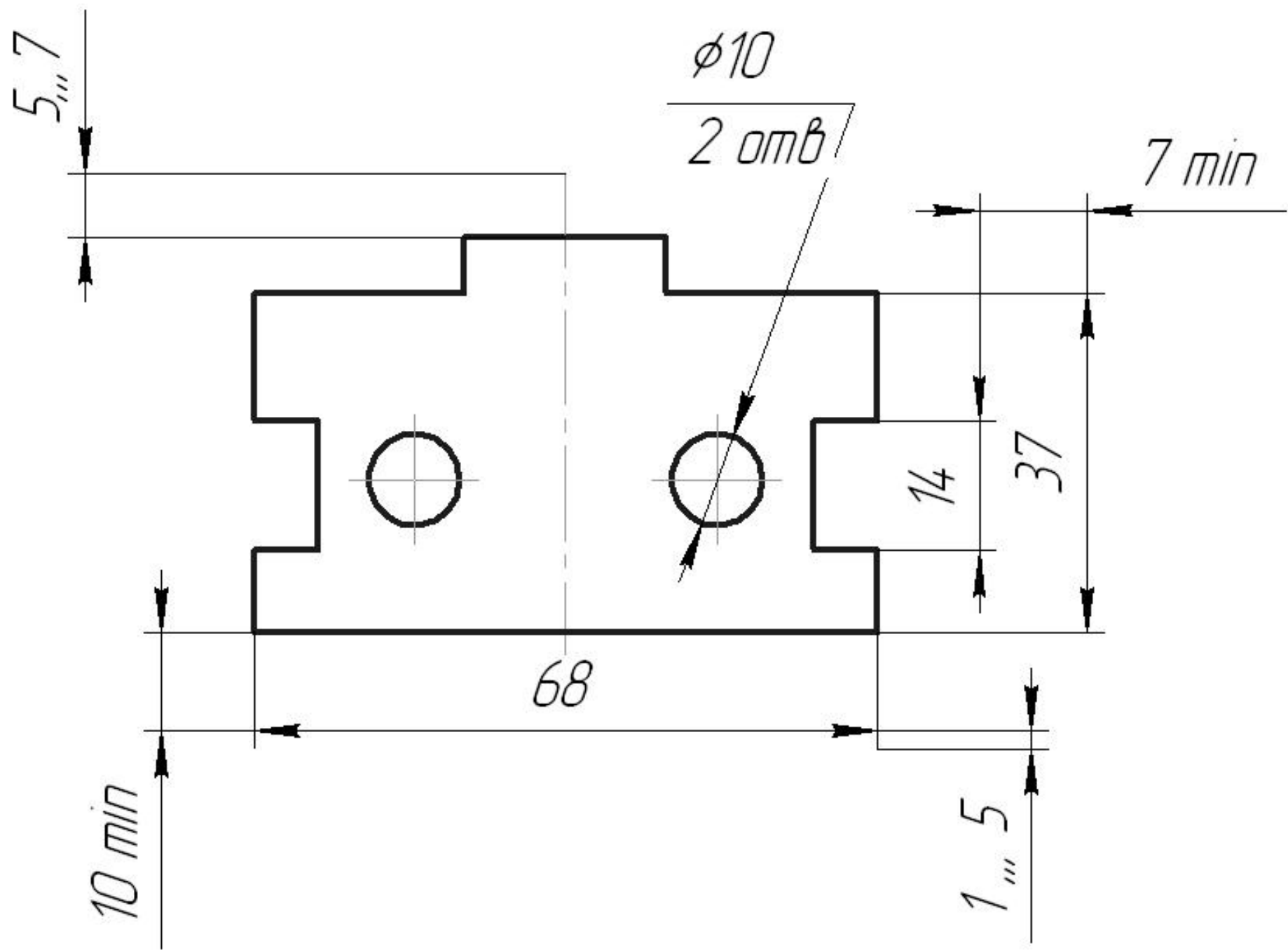
ГОСТ 2.304-68 - шрифти

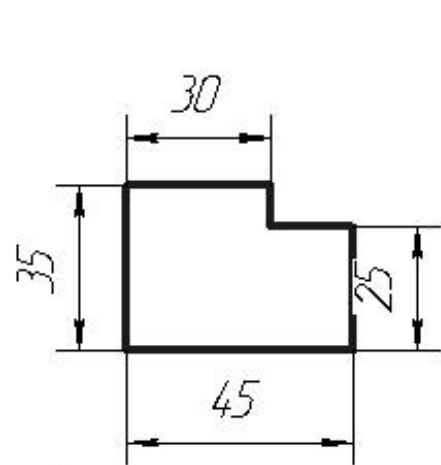
ГОСТ 2.305-68 - Види

ГОСТ 2.306-68 Позначення матеріалів

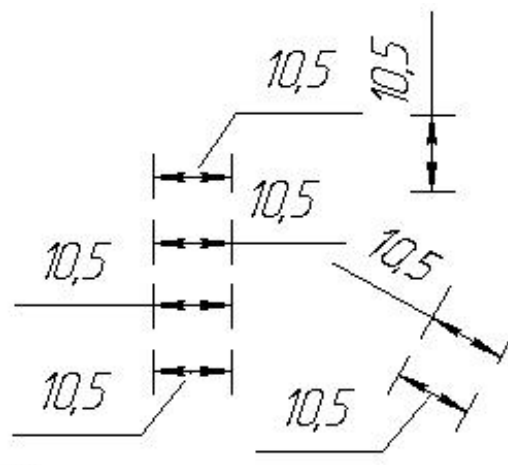


ГОСТ 2.307-68 - Нанесення розмірів на кресленнях

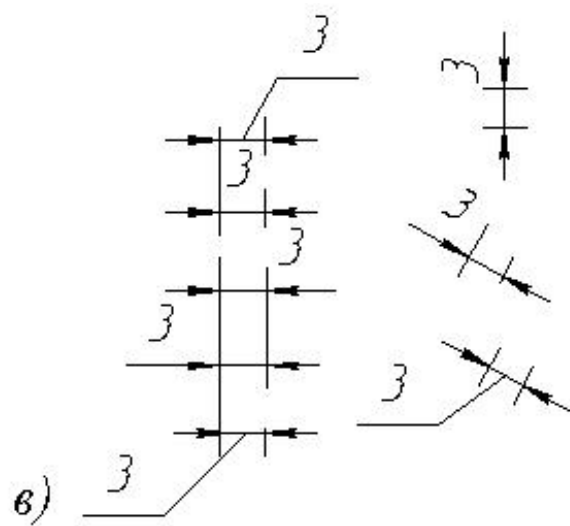




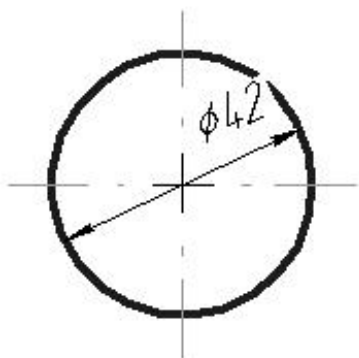
a)



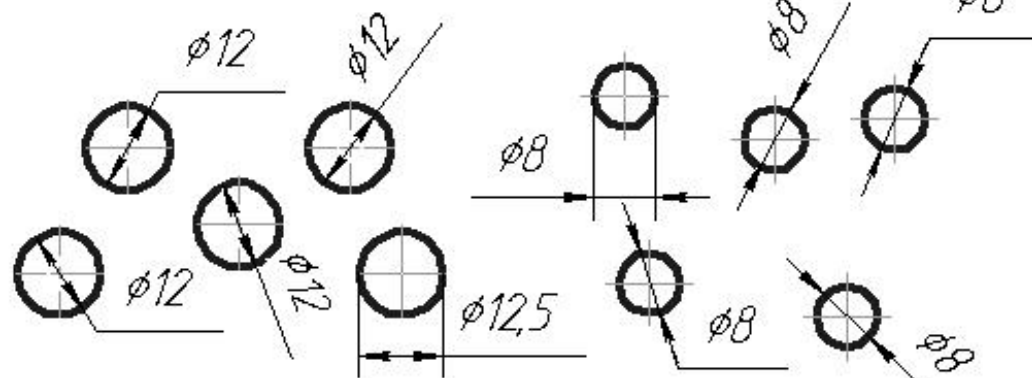
б)



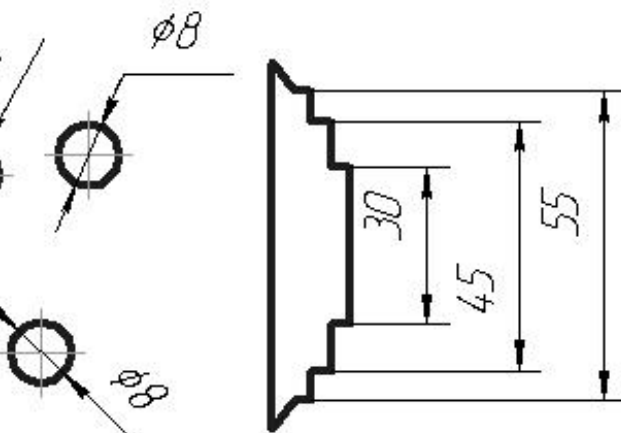
в)



г)

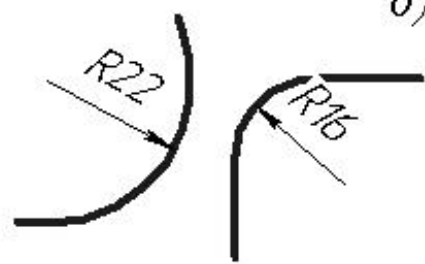


д)

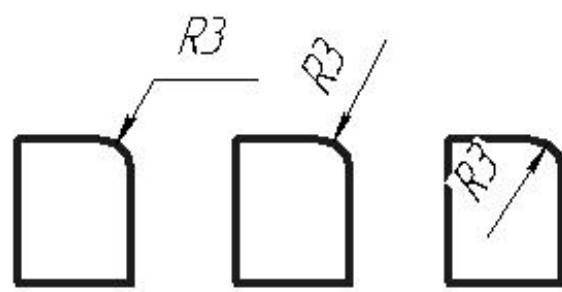


е)

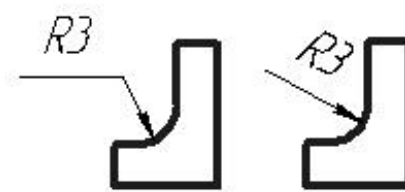
ж)



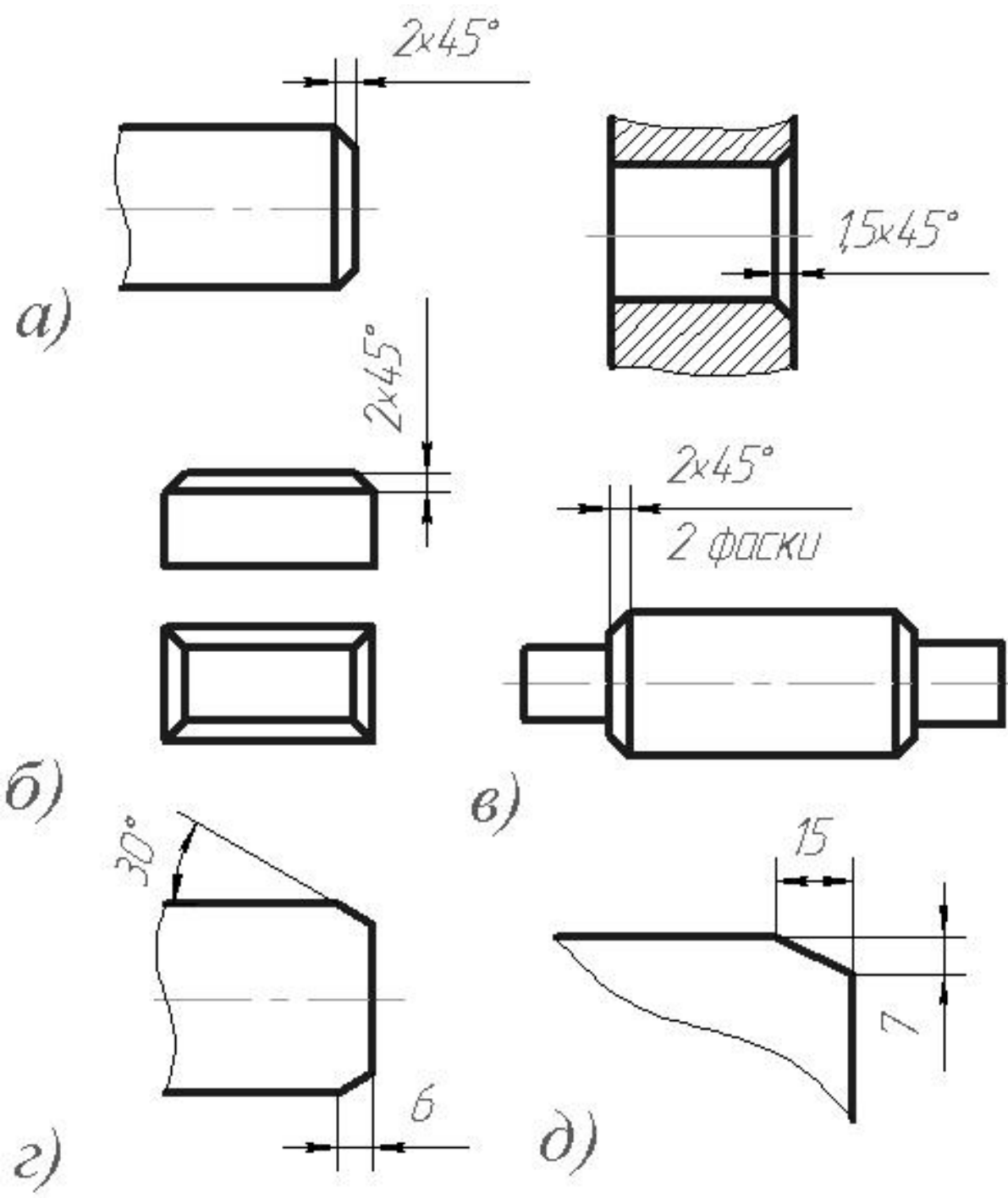
з)



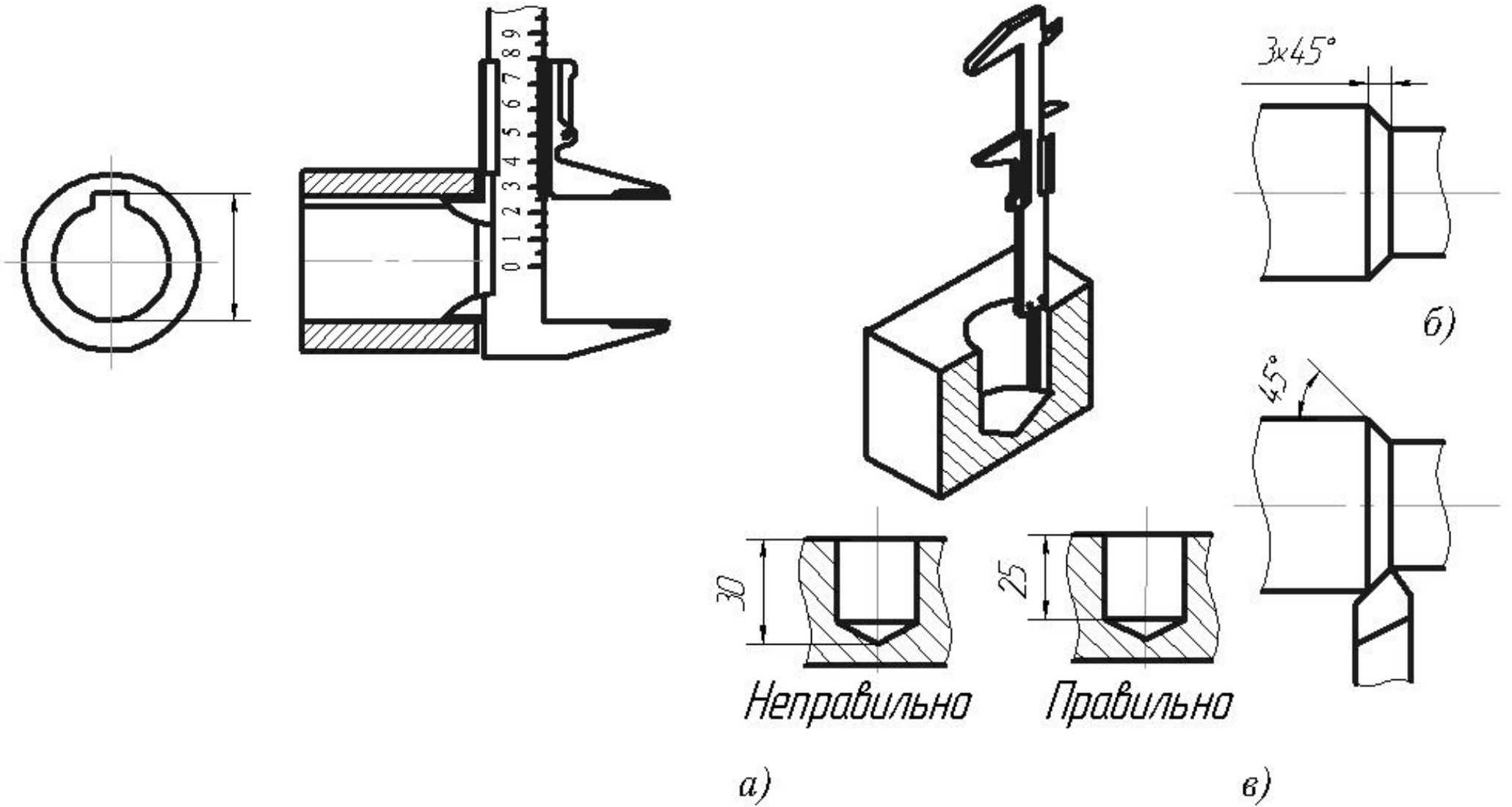
к)

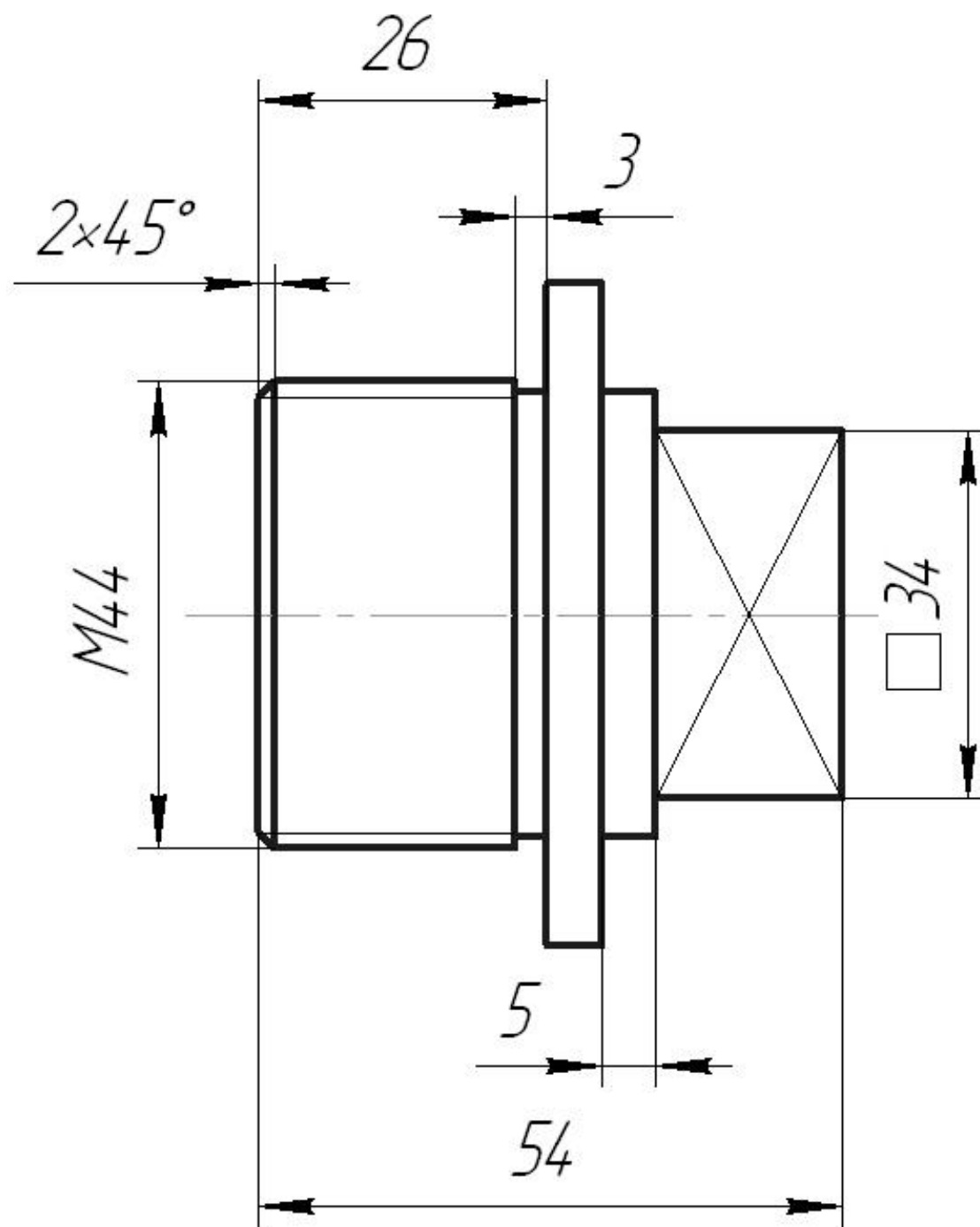


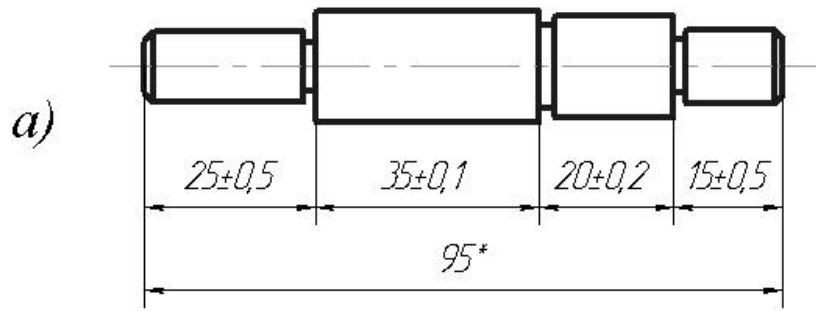
л)



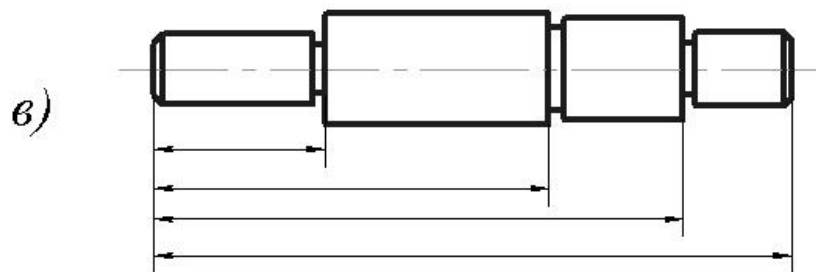
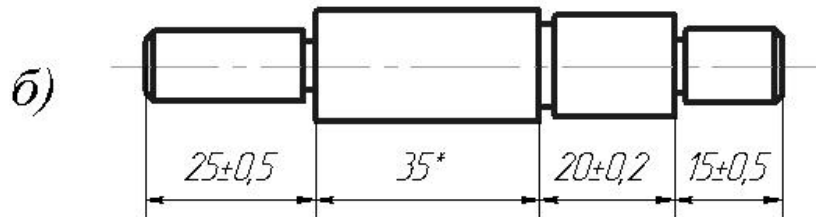
Нанесення розмірів



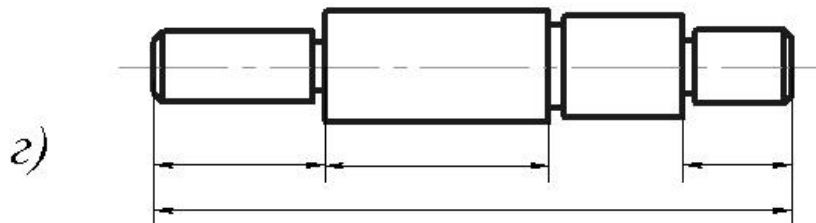




Ланцюговий метод нанесення розмірів

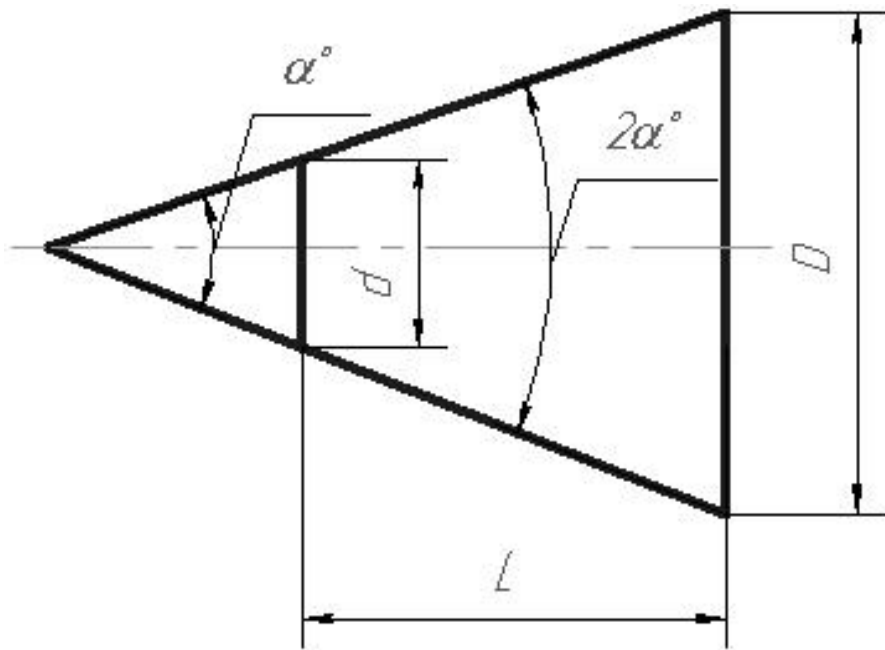


Координатний метод



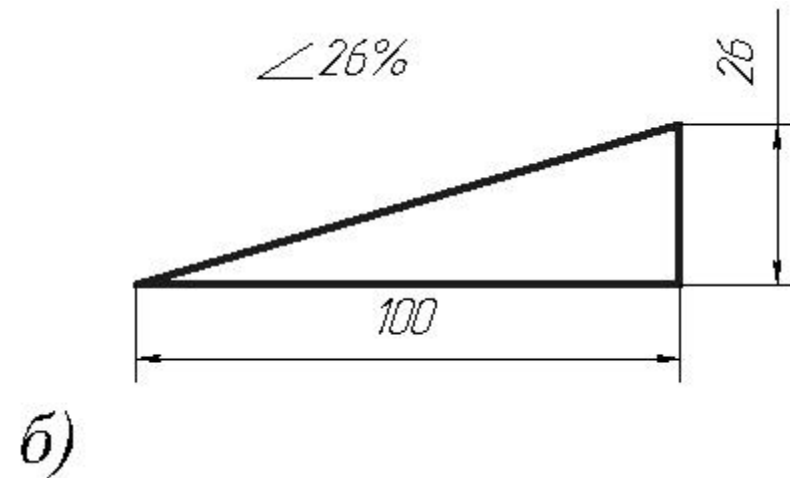
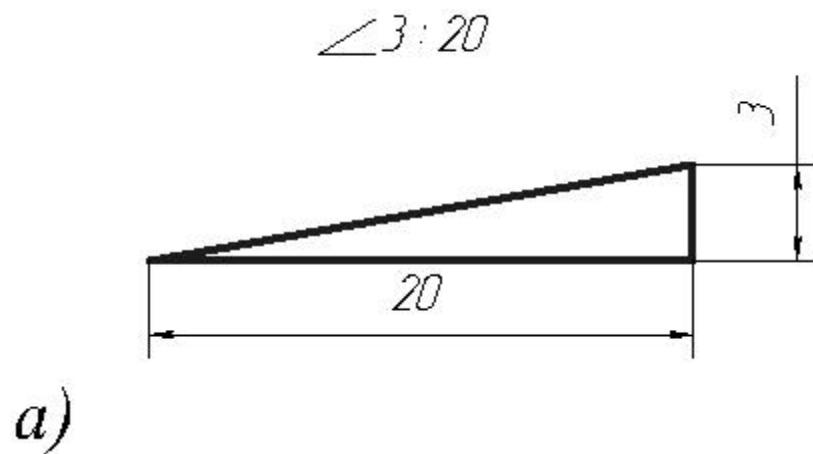
Комбінований метод

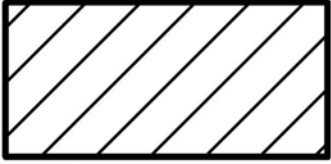
Конусність



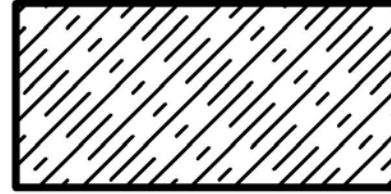
$$\triangleq = \frac{D - d}{L}$$

Уклон





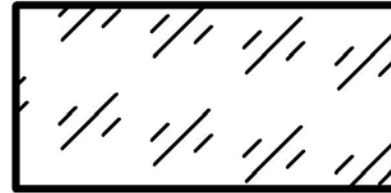
Матеріали та
тверді сплави



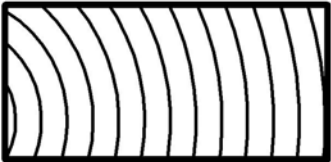
Бетон



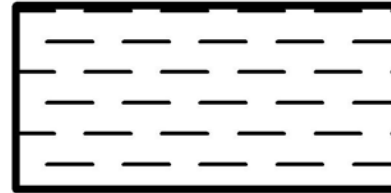
Неметалеві ма-
теріали,
зокрема
волокнисті
монолітні
(пресовані), за
вийнятком
вказаних
нижче



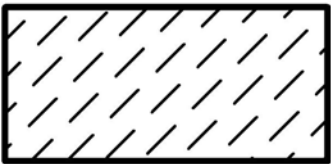
Скло та інші
прозорі
матеріали



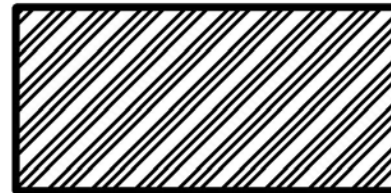
Деревина



Рідини

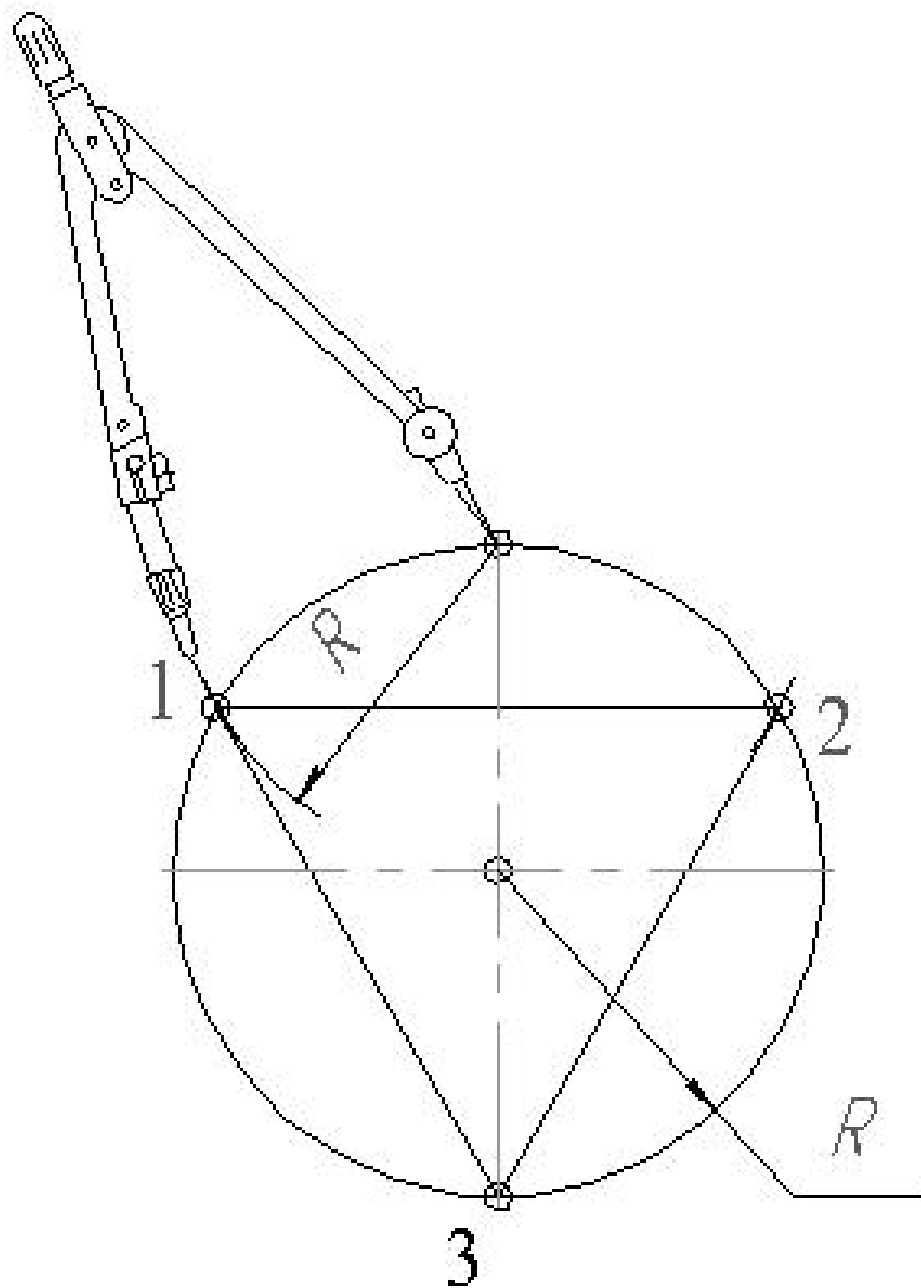


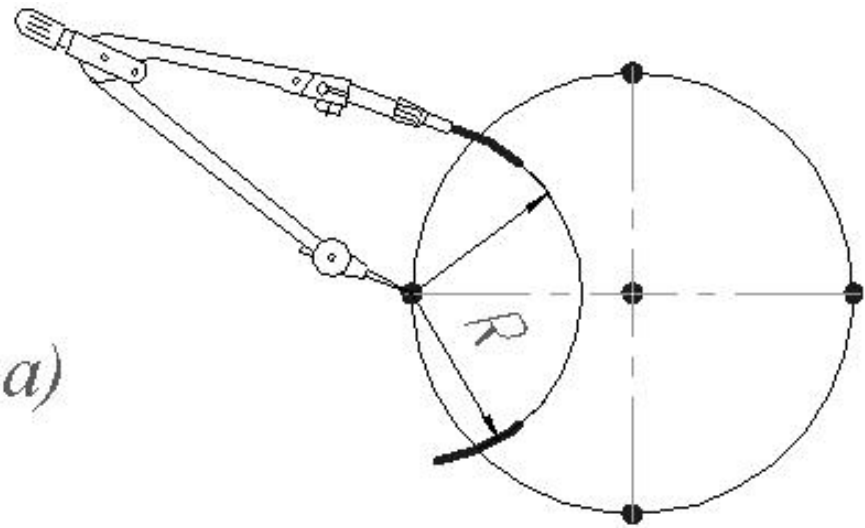
Камінь
природній



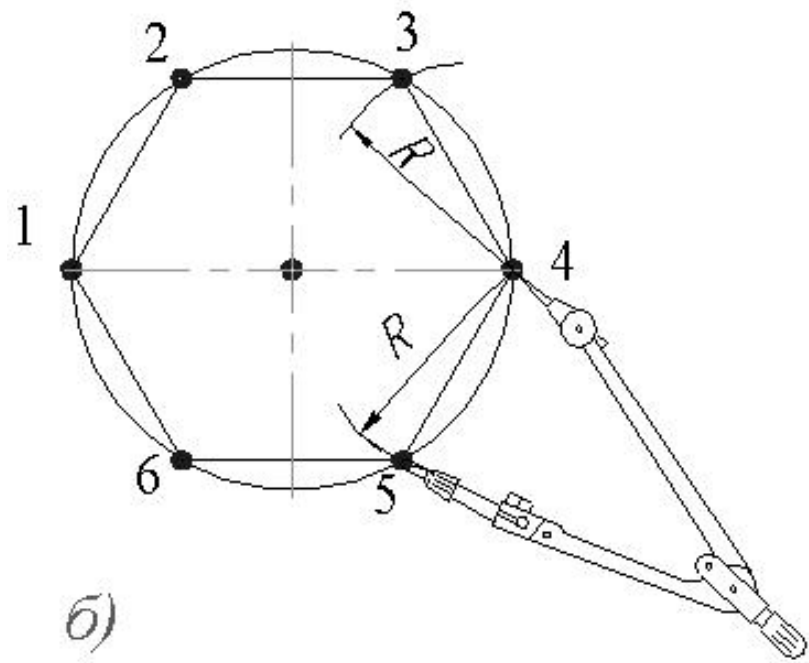
Ґрунт

Геометричні побудови

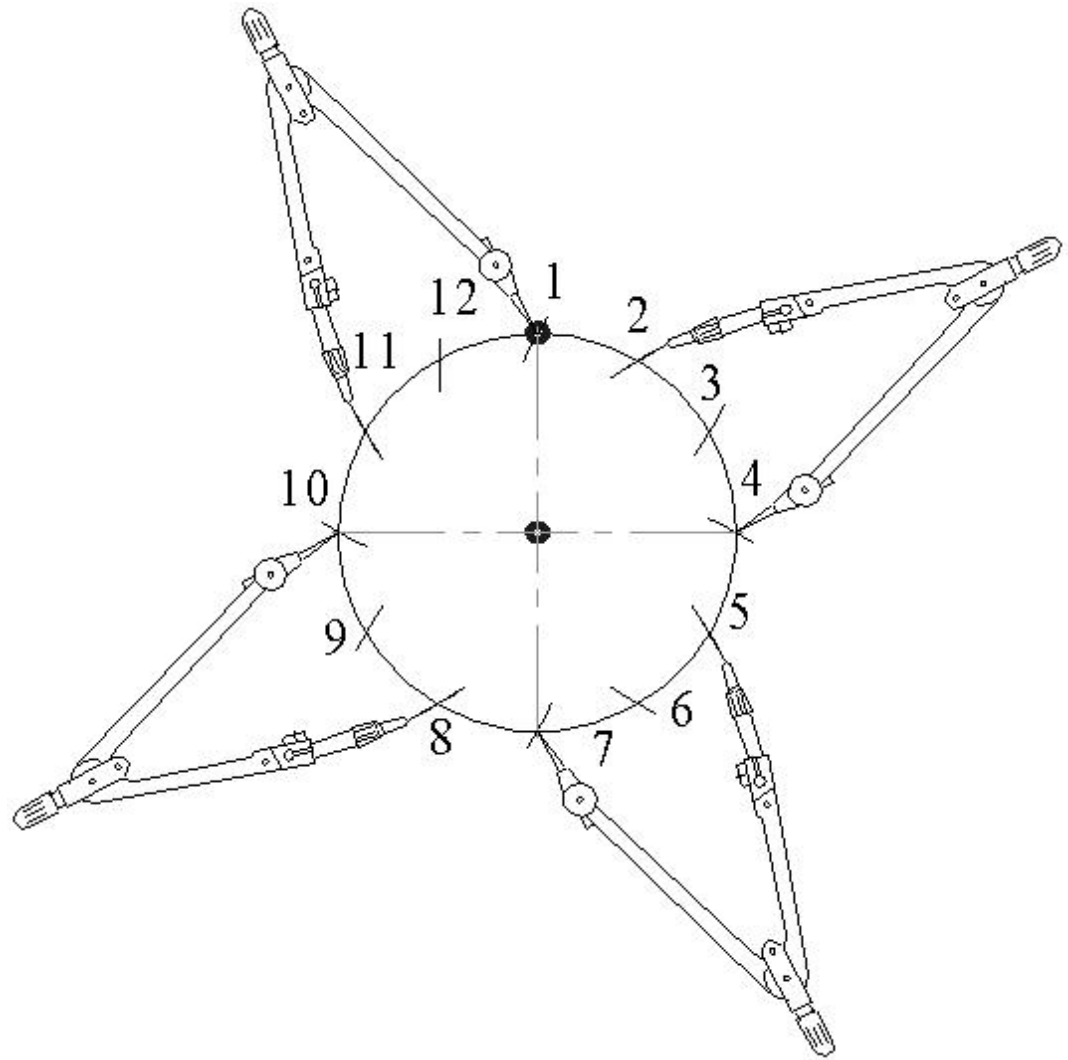


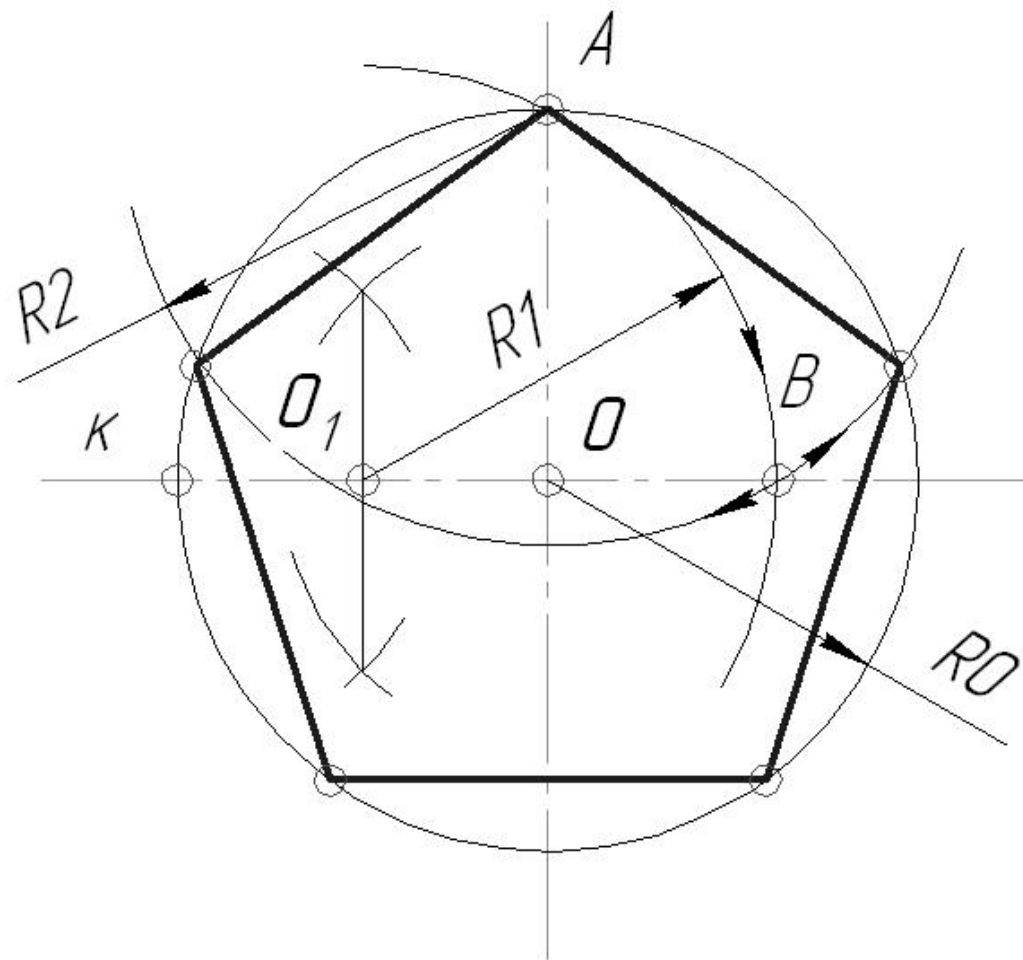


a)



b)



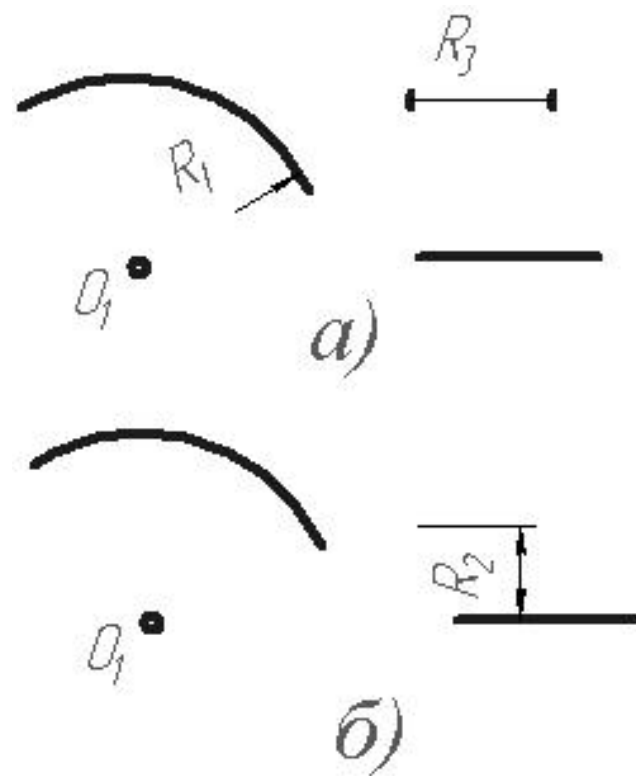
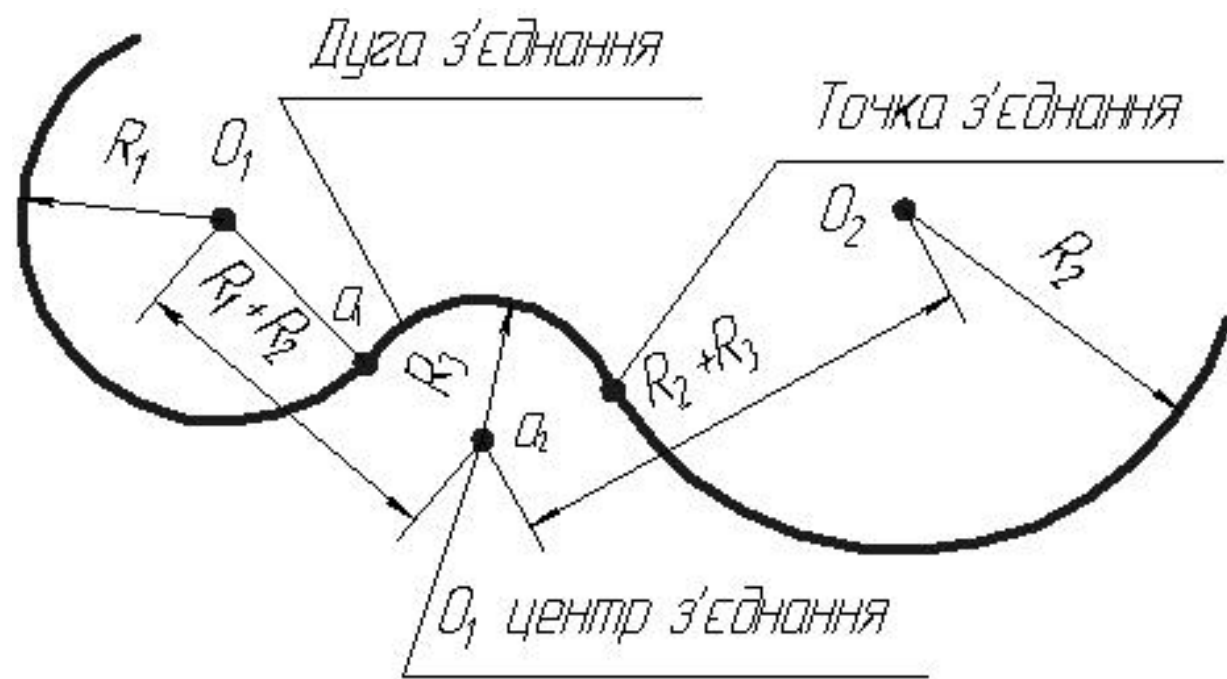


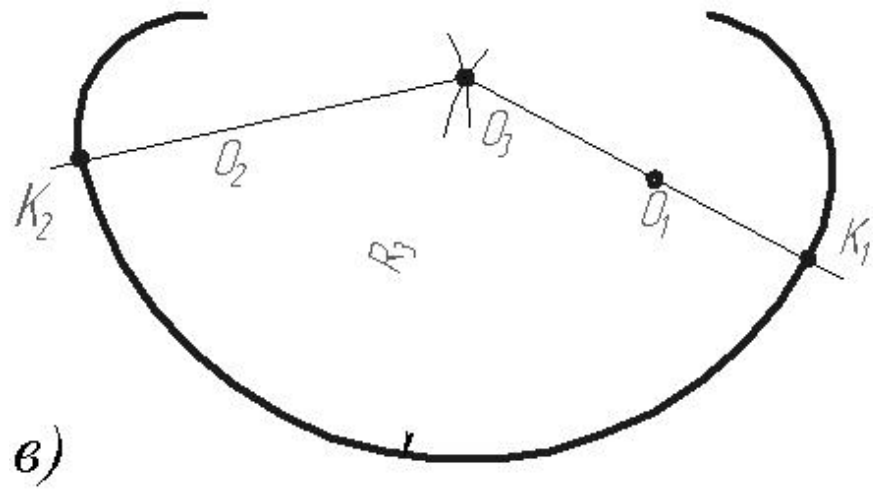
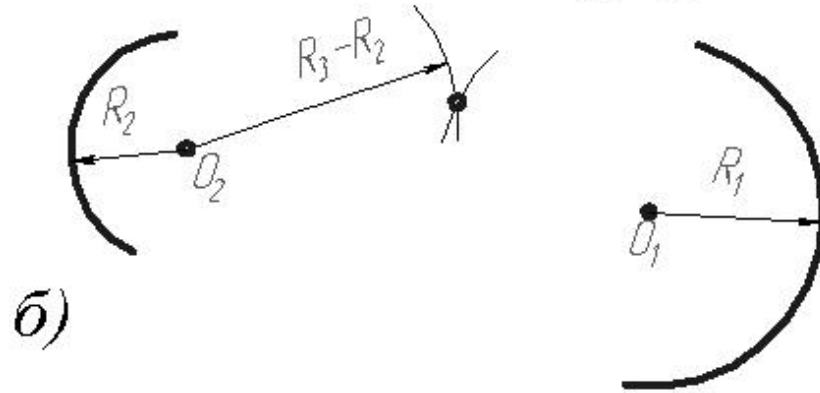
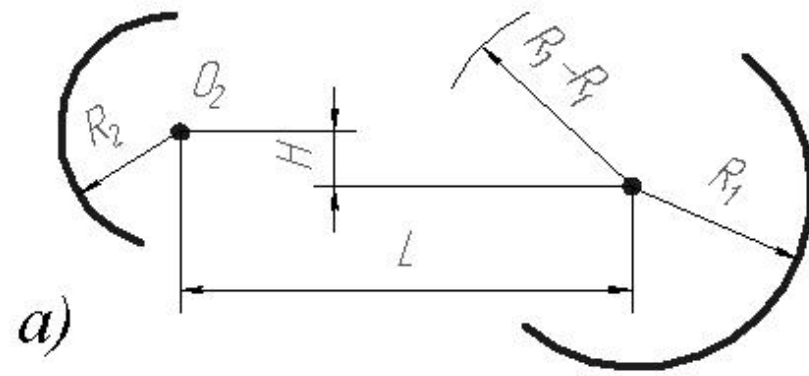
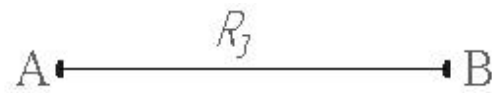
1. $O_1 = \frac{1}{2} OK$

2. $O_1A \Rightarrow R_1 \Rightarrow B$

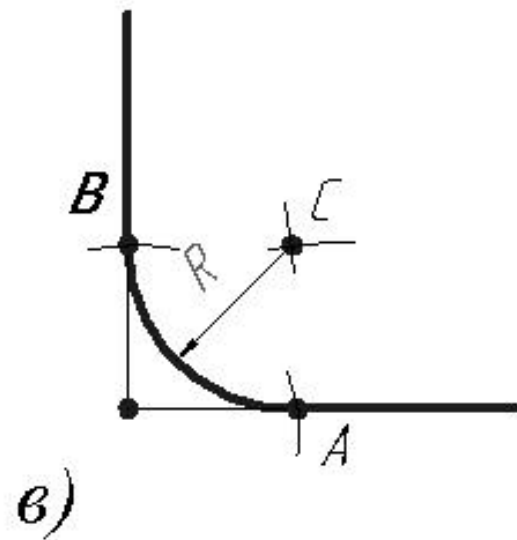
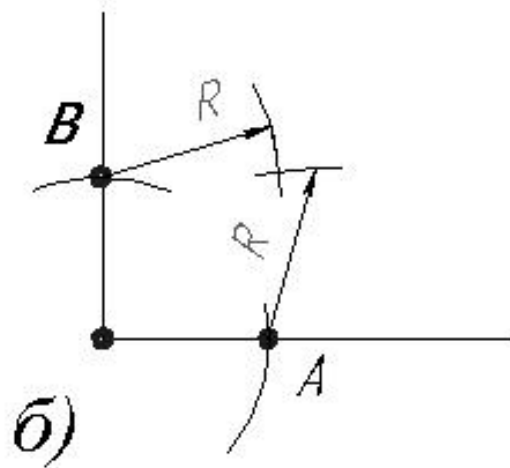
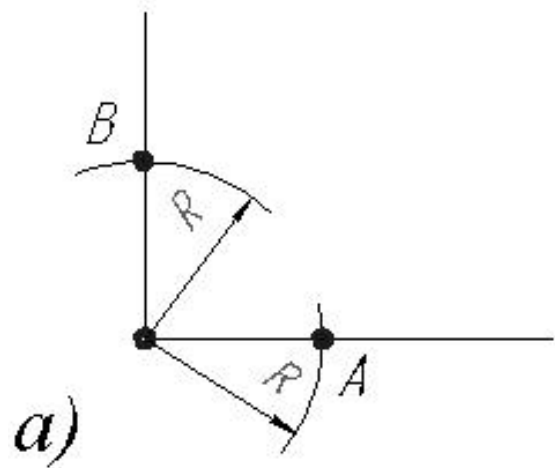
3. $AB = R_2 = \frac{1}{5}$ окружности

Спряжіння



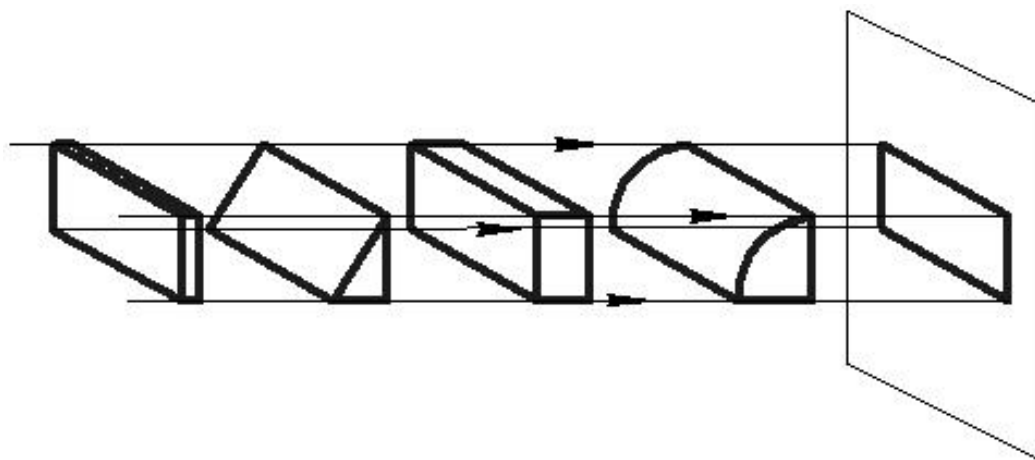
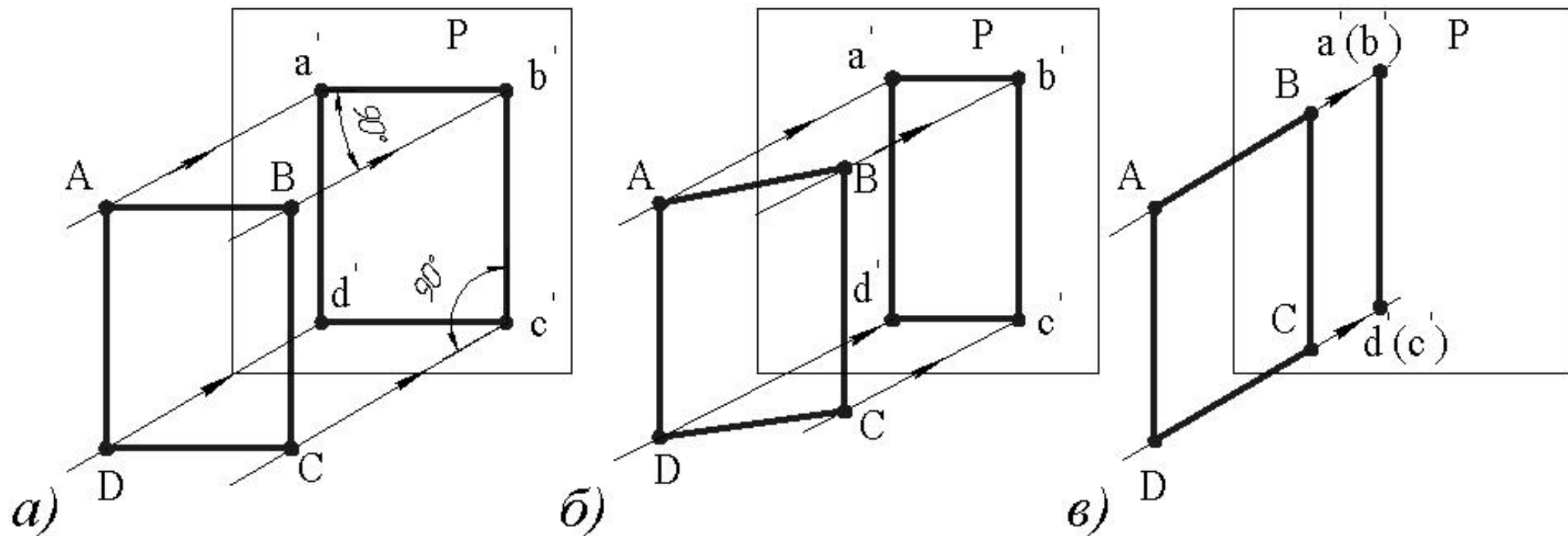


R



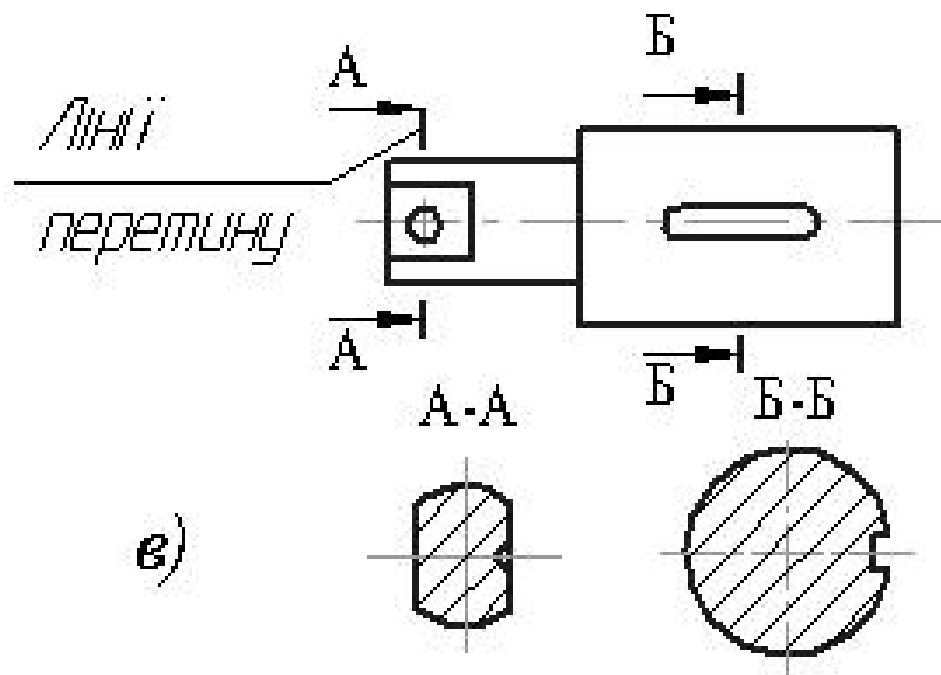
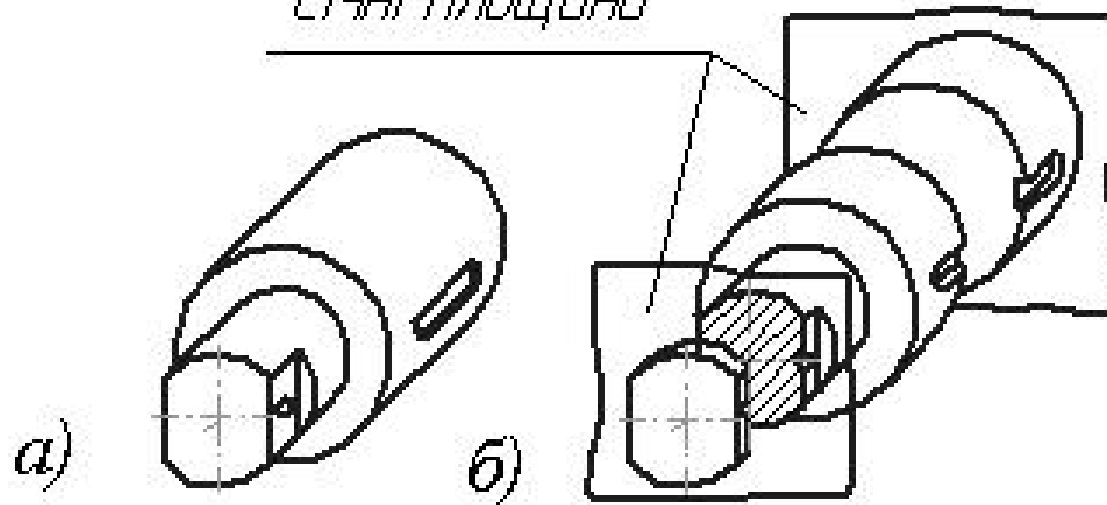
Прямокутні проєкції

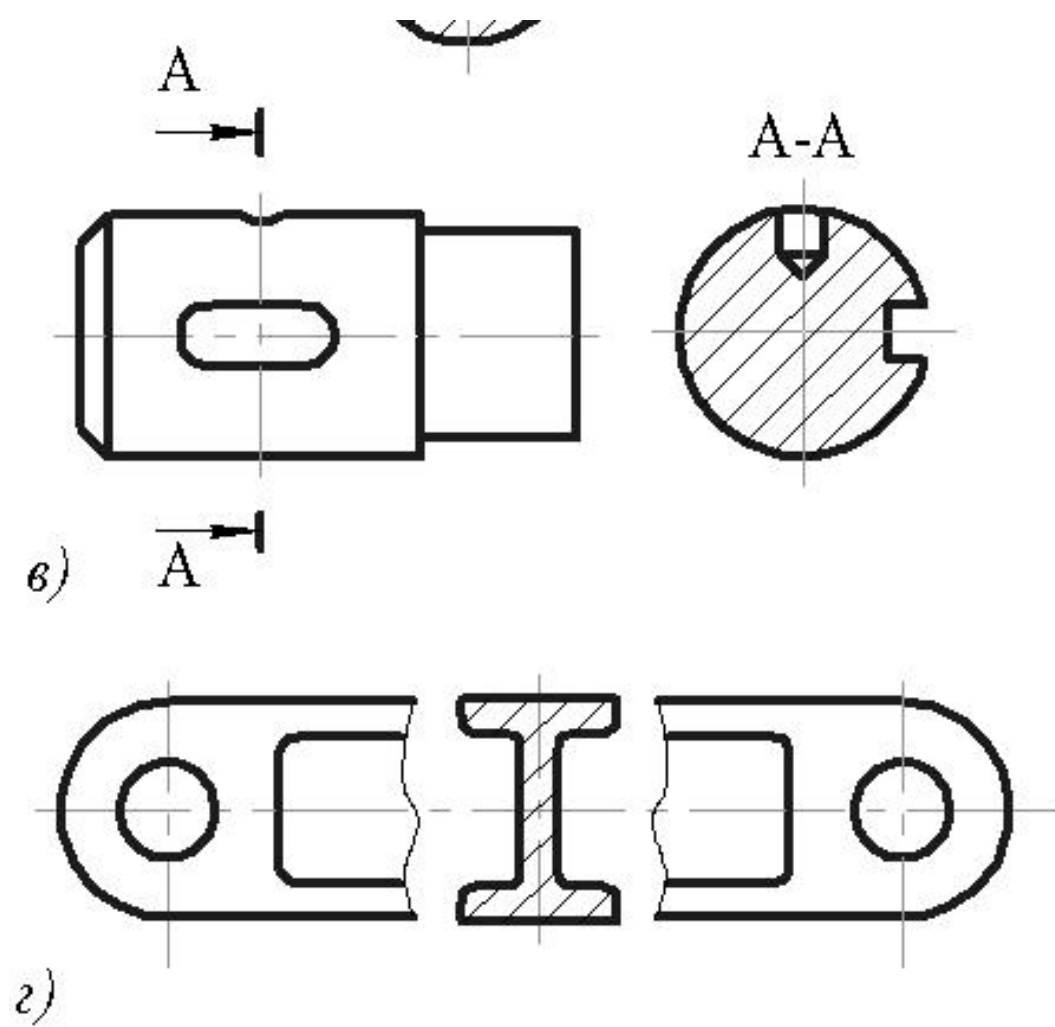
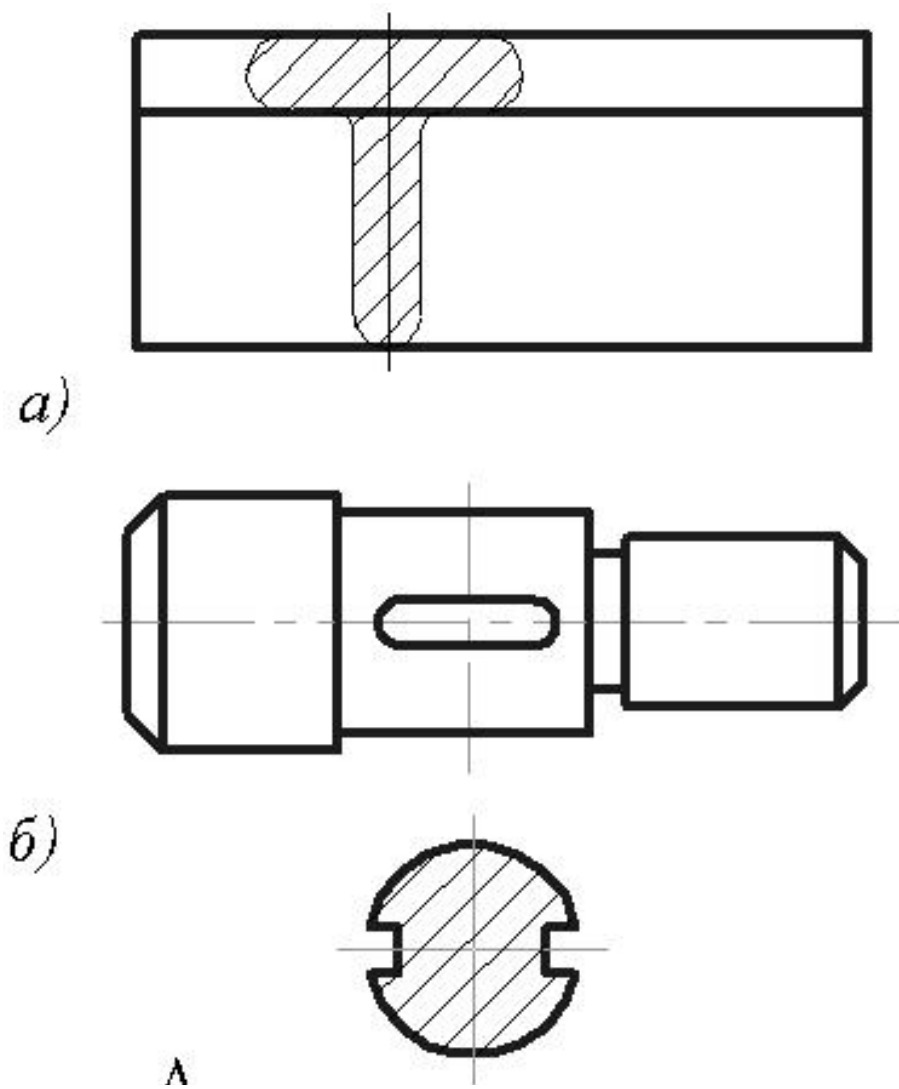
Комплексний кресленик

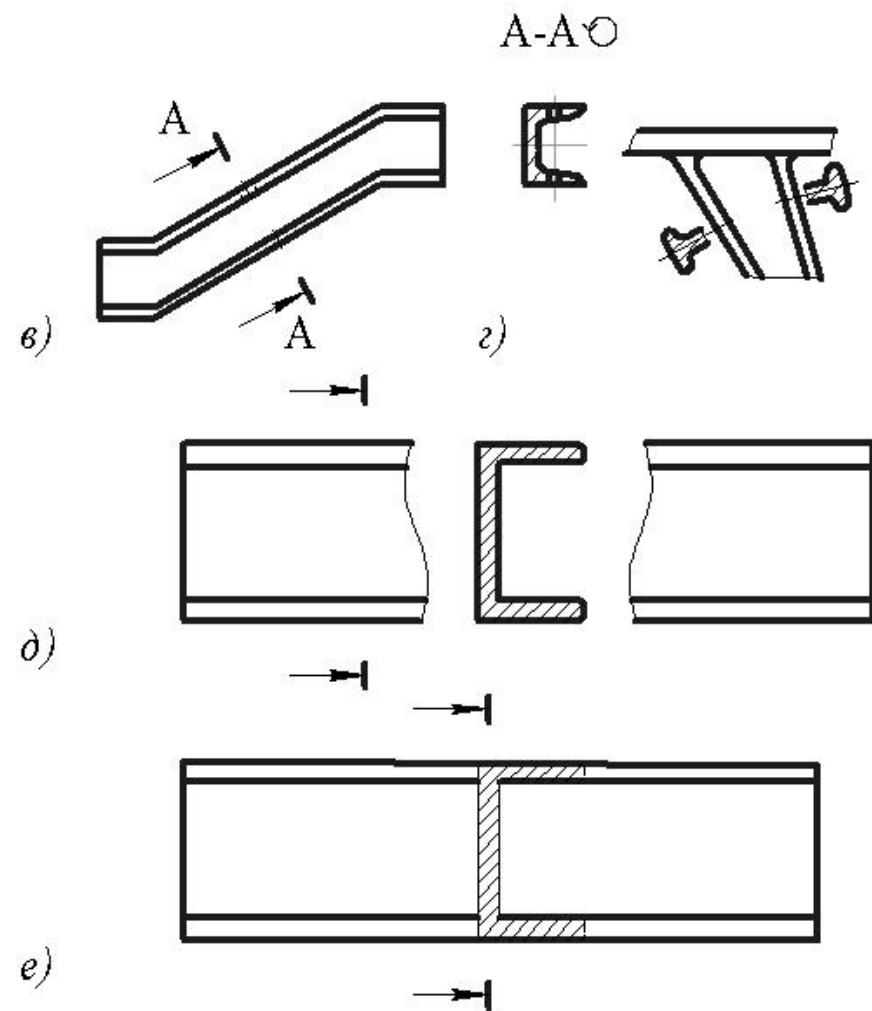
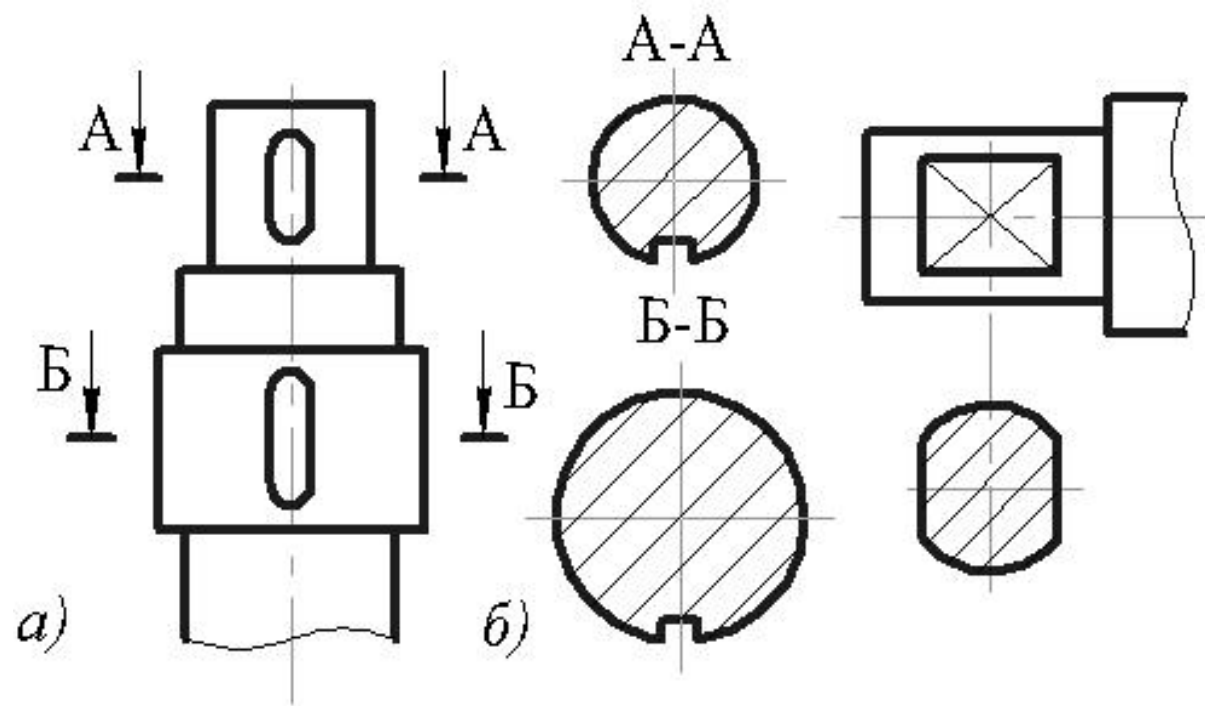


Перерізи

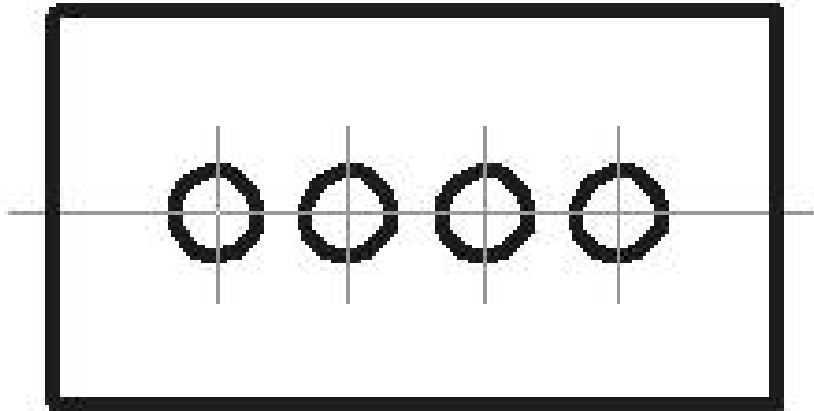
Лінії площини





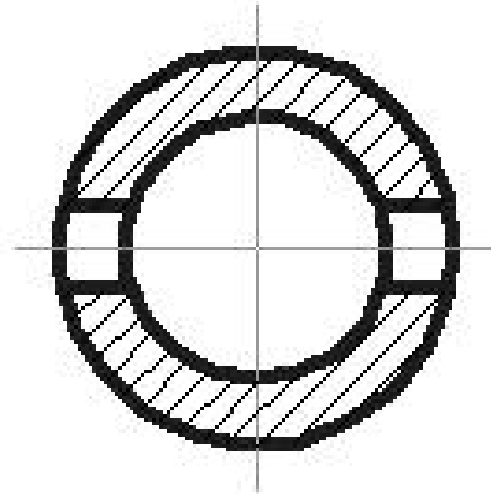


A B A A
→ → → →

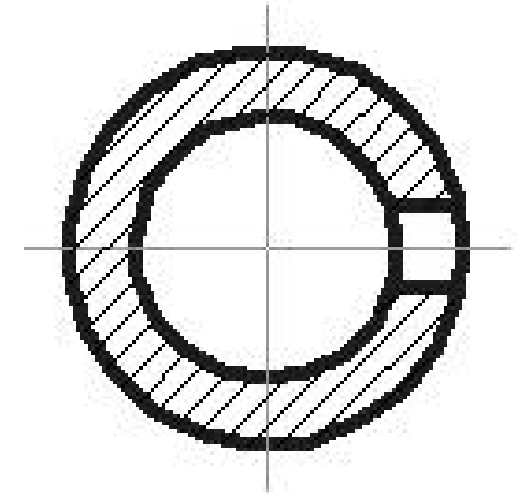


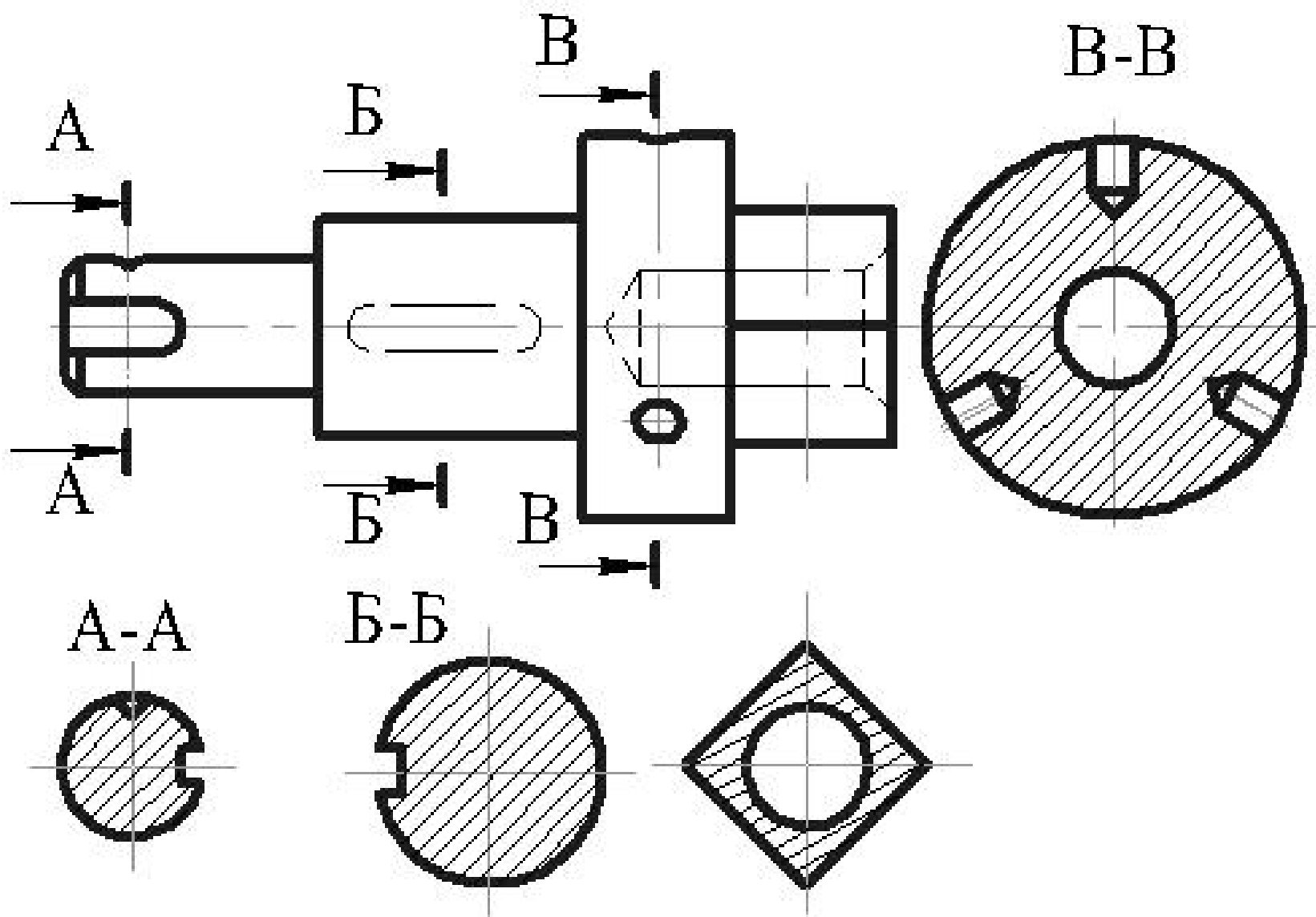
→ → → →
A B A A

A-A

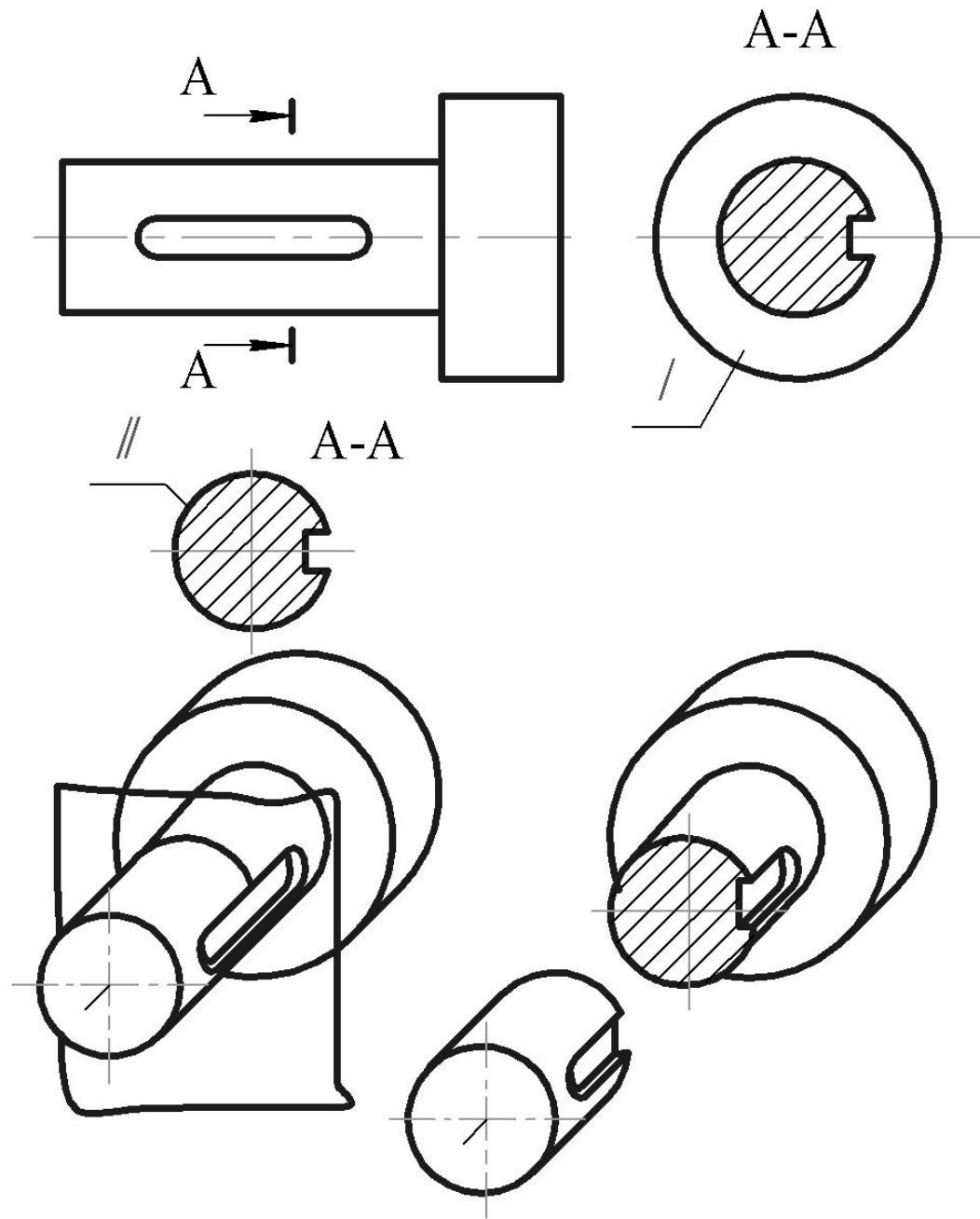


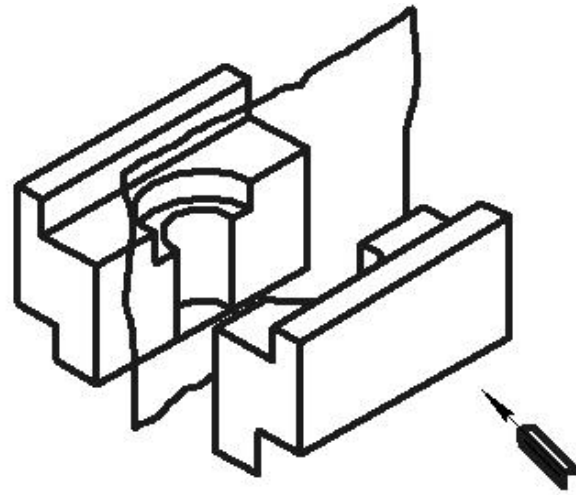
B-B



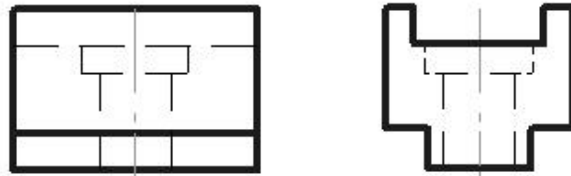


Розрізи

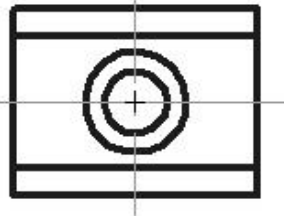




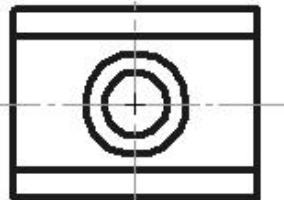
a)

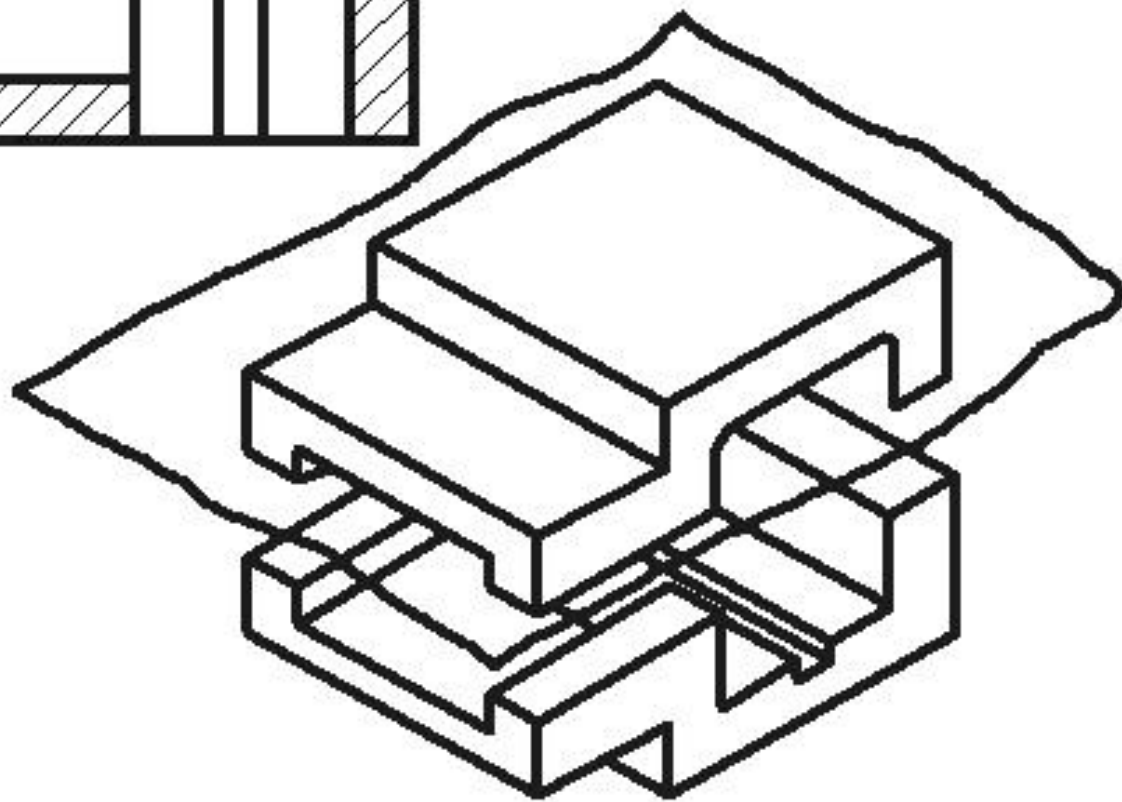
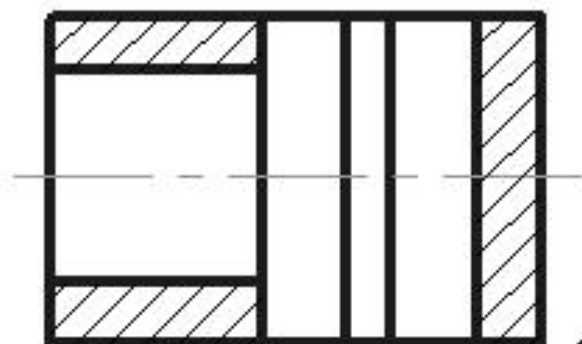
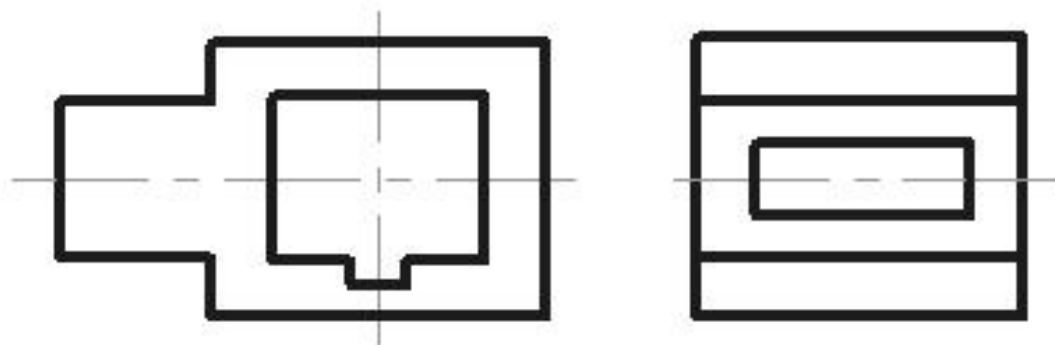


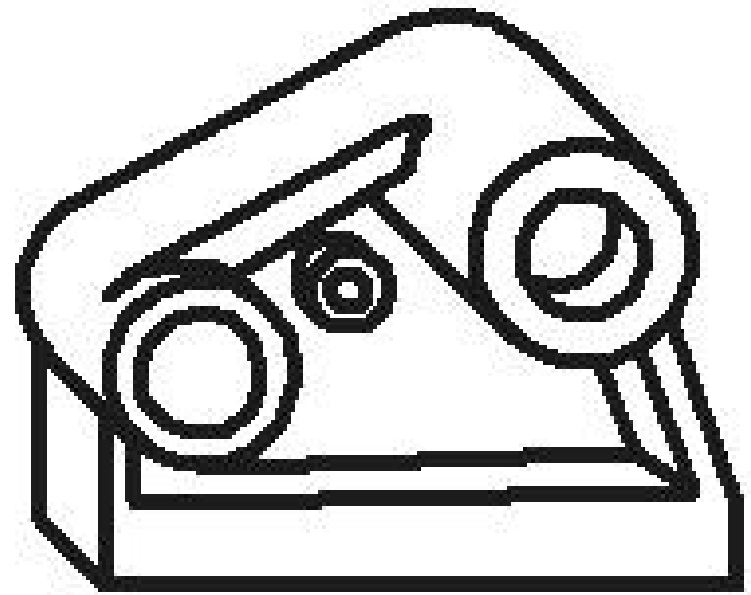
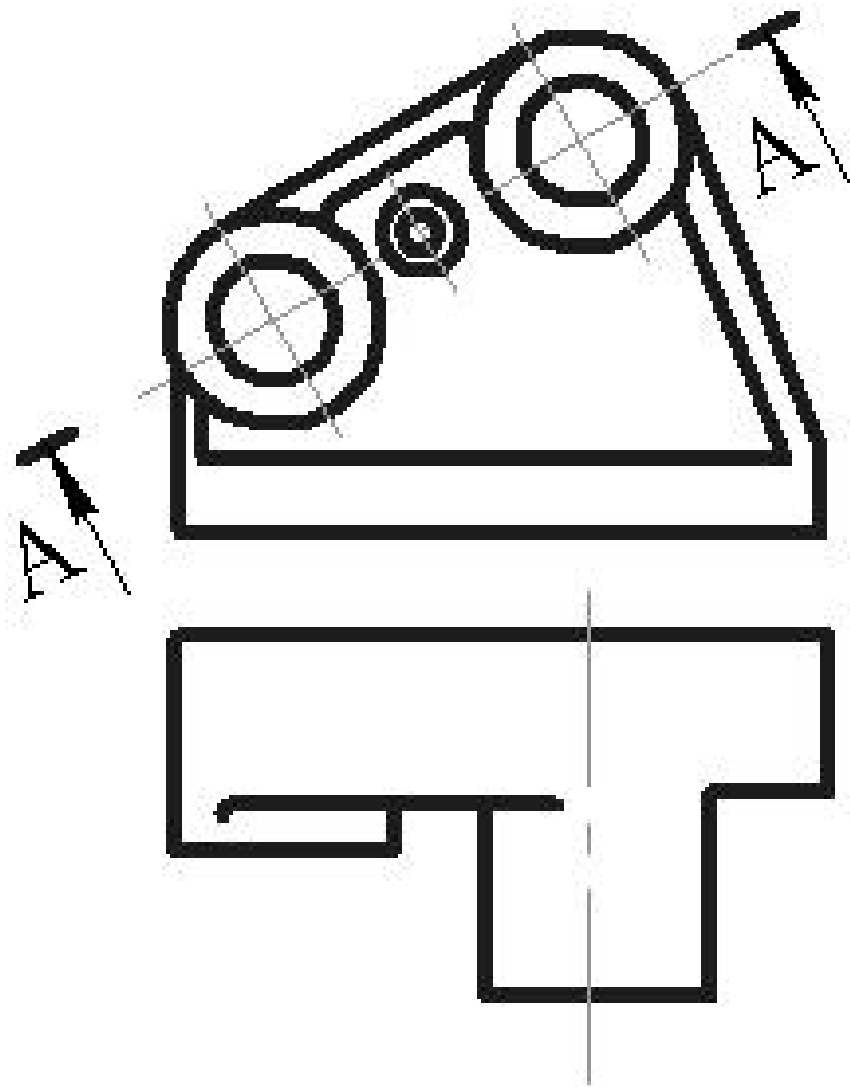
б)



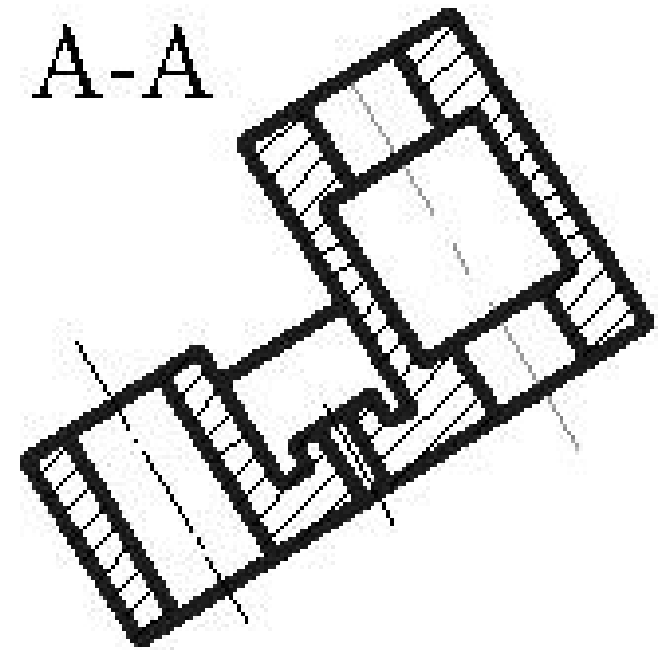
в)

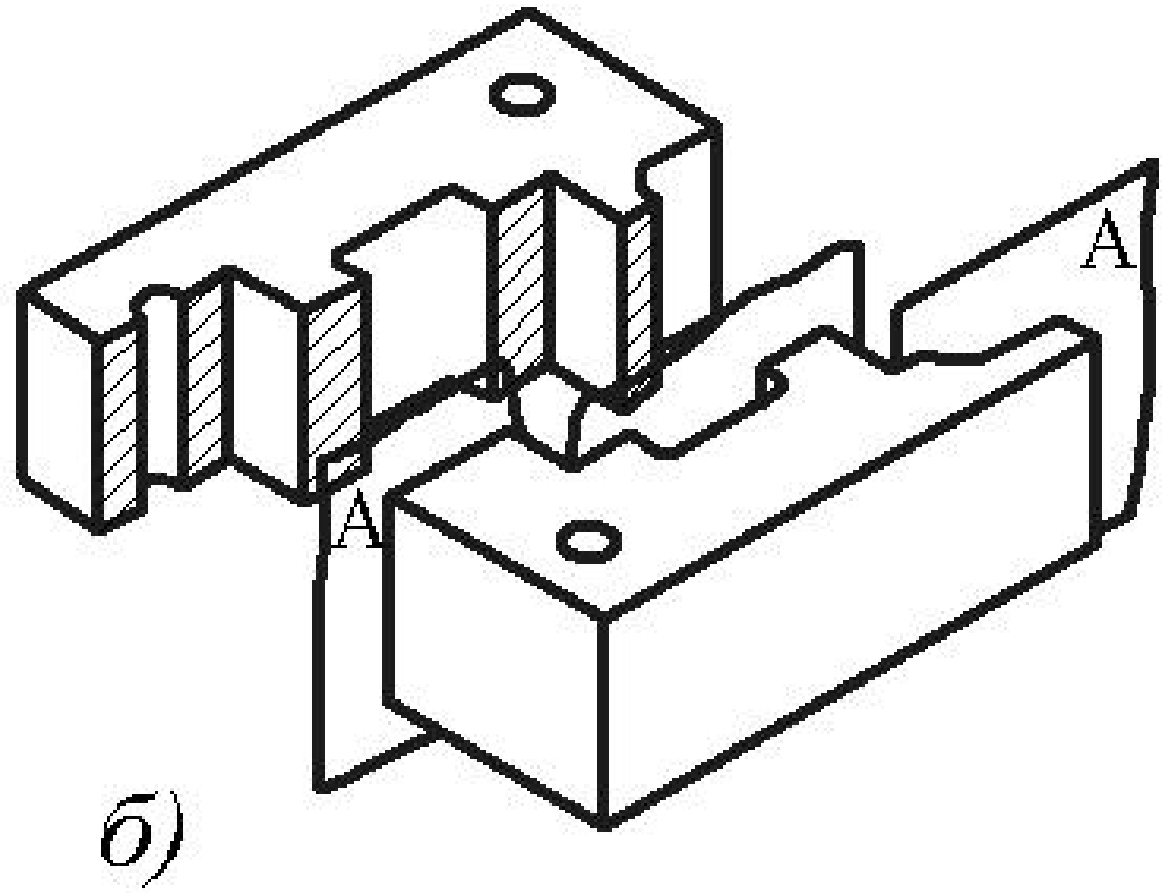
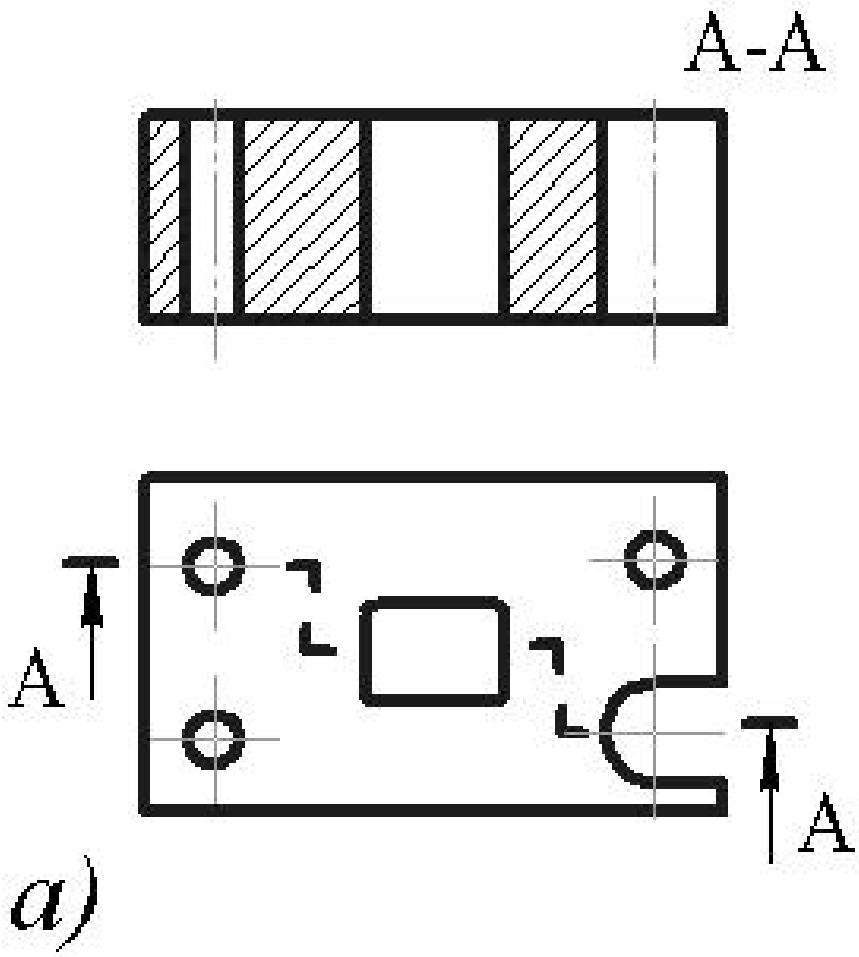


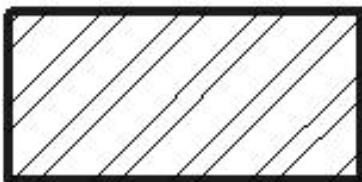
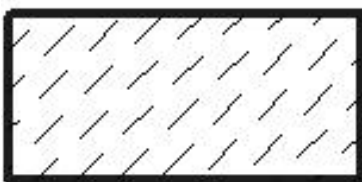
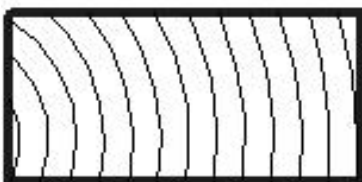


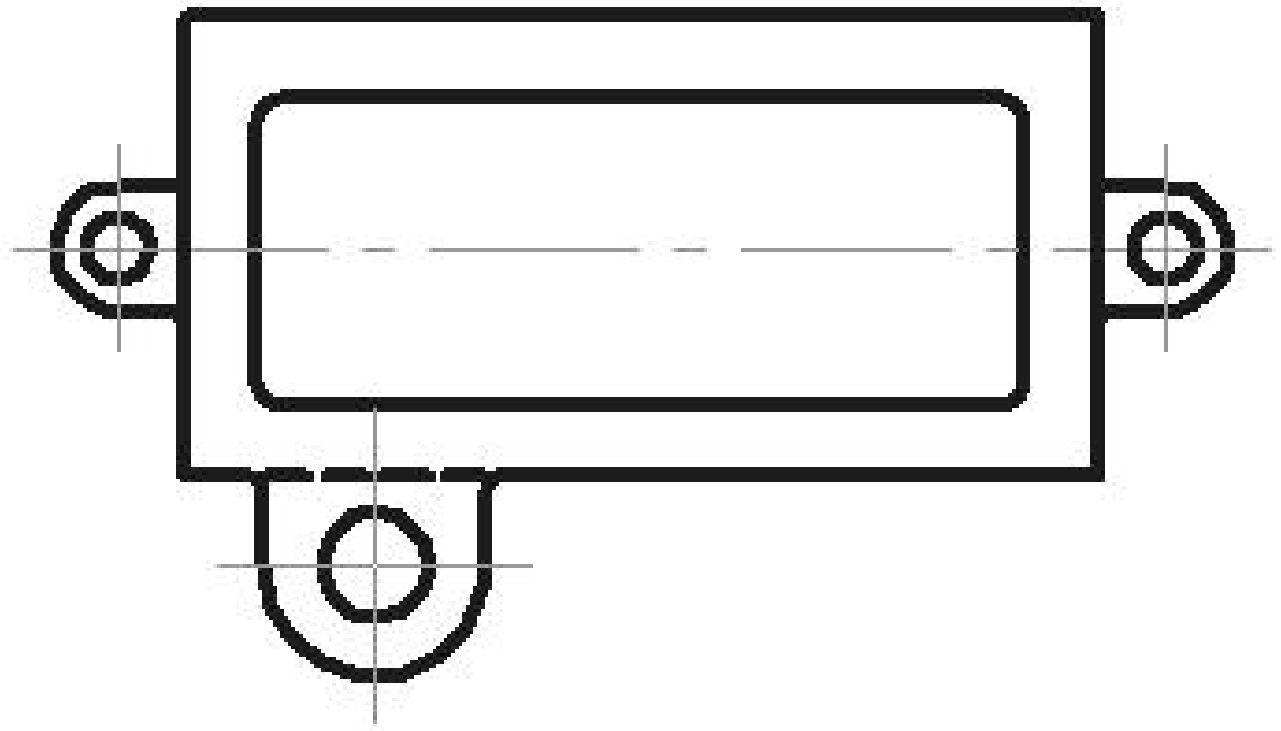
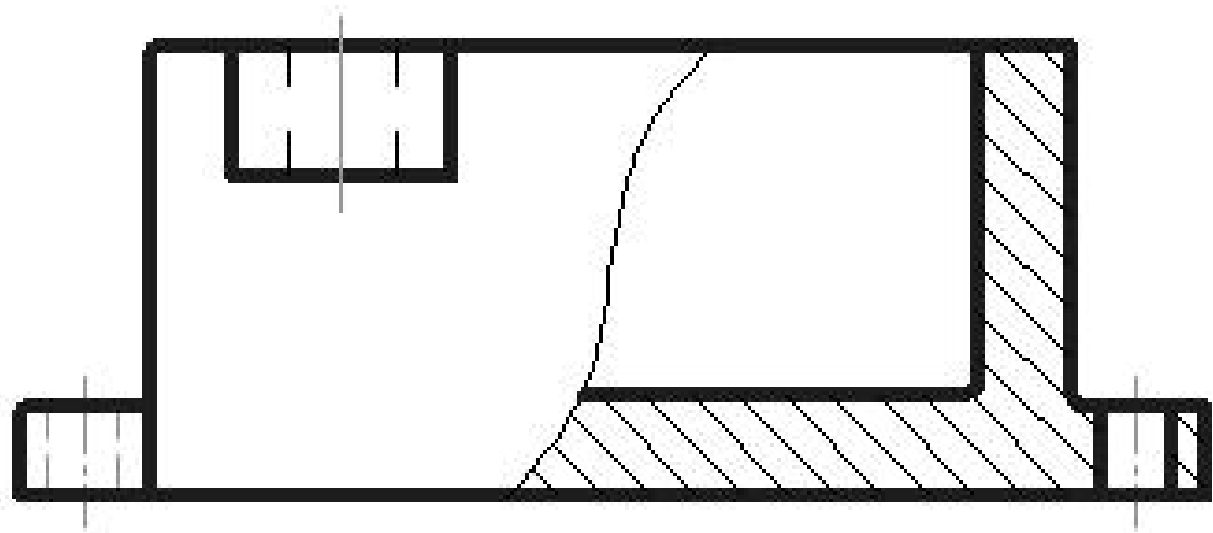


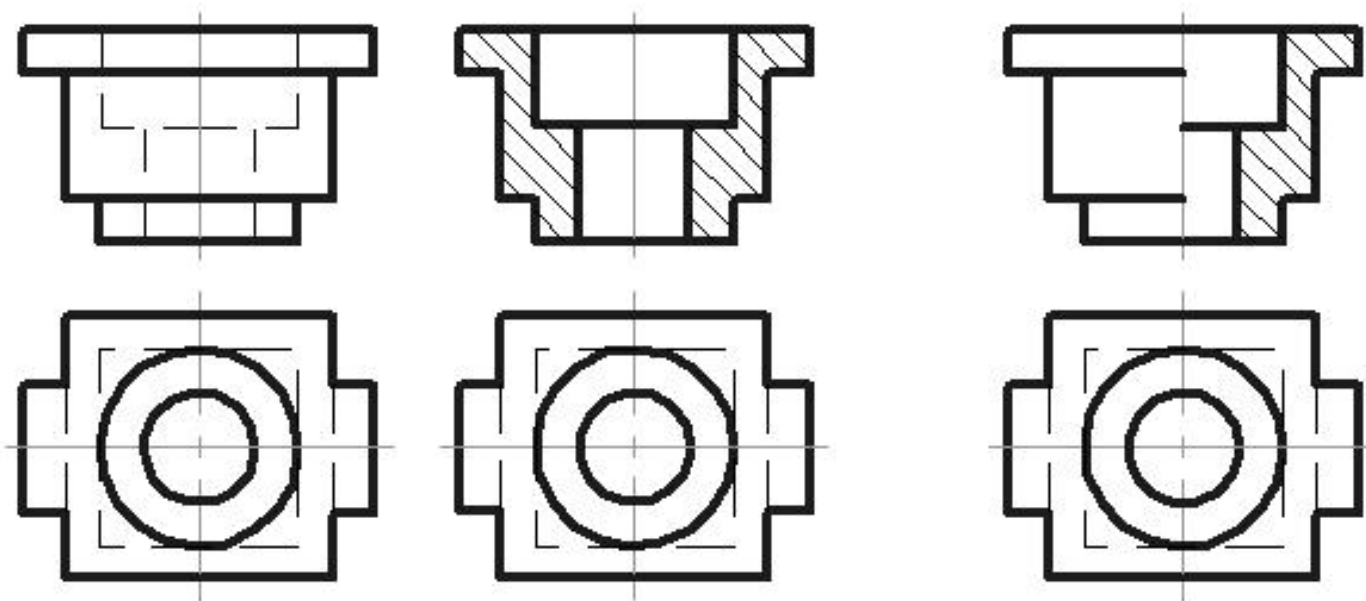
A-A





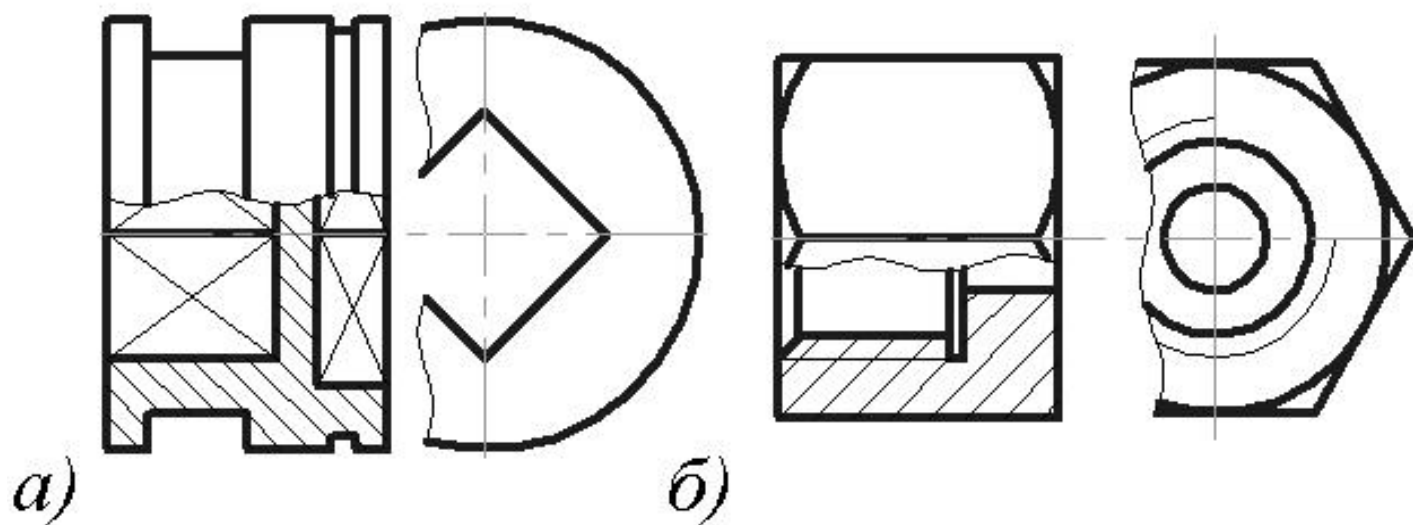






a)

b)



a)

b)